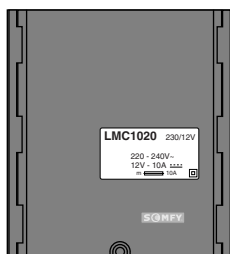


## LMC 1020 230/12V INSTALLATION Guide



**Overview :** the LMC 1020 is a power supply and a controller for one or two linear motors. It can be locally controlled with double push buttons or Infra Red transmitters (IRT 103 or IRT 803), when the Infra Red sensor is connected. Master control can be achieved through Somfy bus line with a double push button or an automatic control.

### 1 - CHARACTERISTICS

The LMC 1020 is compatible with the IRT 103, IRT 803 transmitters, the IR3 sensor and double push button switches.

#### Technical data :

Nominal supply voltage : 230V AC

Protection index : IP 40

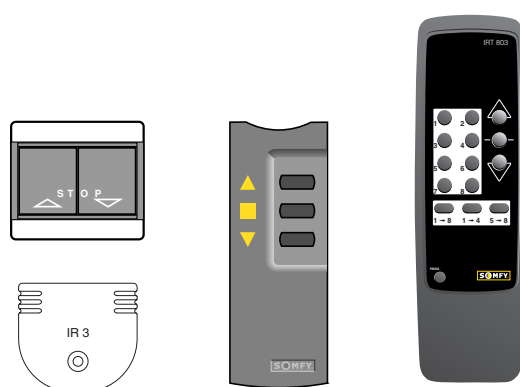
Working temperature : 0 °C to 40 °C

Dimensions : 135 x 120 x 44 mm

Output voltage : 12 VDC

Motor working time : adjustable from 0,5s to 25s

Fuse (2 spare fuses supplied) : TR10



### 2 - INSTALLATION

#### A) Mounting :

The device has to be **fitted indoors**.

When it is fitted outdoors, use a waterproof box.

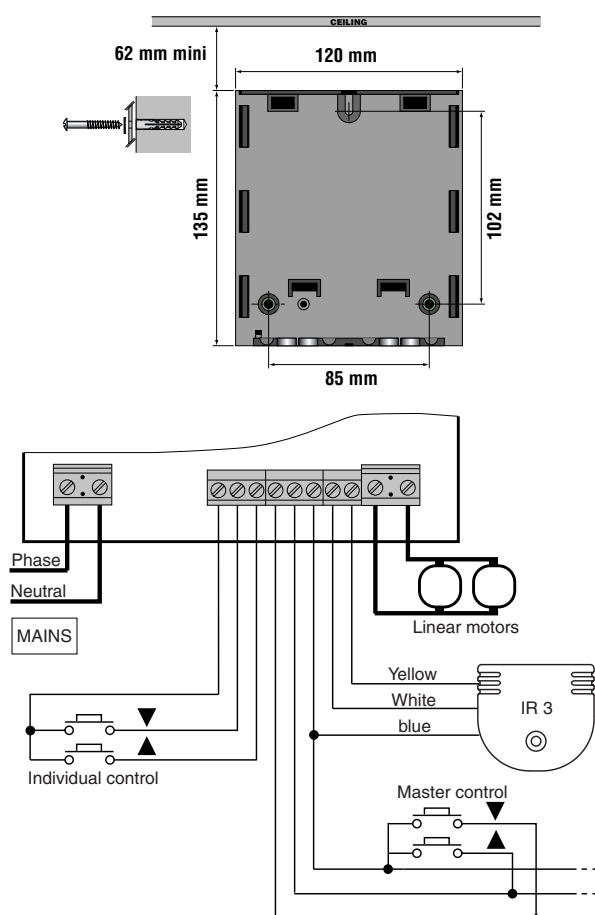
- 1) Drill 3 holes into the wall according to the mounting diagram.
- 2) Fix one screw into the wall and fit the base of the LMC 1020 by sliding it on the screw head.
- 3) Slide the cover of the LMC 1020 and fix two screws on the bottom of the base.

#### B) Wiring :

The LMC 1020 is compatible with all Somfy DC motors. Cabling arrangements are shown in the diagram.

Respect the electrical standards as well as the following points :

- Disconnect the main before carrying out any work.
  - Use flexible cables.
  - Ensure that no longitudinal forces act on the screw terminals after installation.
- If one of the motor works in the wrong direction, please invert its two supply wires



### C) Programming :

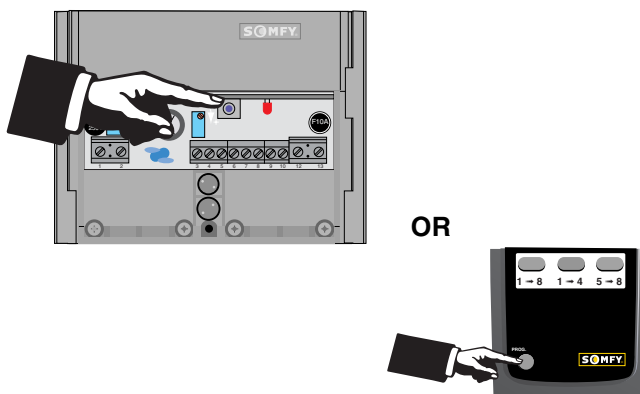
In the programming mode, the channel of the LMC 1020 can only be configured with the IRT 803 transmitter.

#### There are two ways to enter in the programming mode :

- by the «prog» push button located inside the LMC 1020.
- by the «prog» key located on the IRT 803.

#### WARNING :

*If you use the IRT 803 ,it is necessary to «lock» the LMC 1020 which are not being programmed by operating them in either UP or DOWN direction (they will be locked for 3 minutes and it is not possible to enter in the programming mode by the IRT 803). To unlock them give a stop order.*



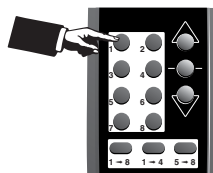
#### ■ To enter in programming mode :

Press and hold the “PROG.” Key of the IRT 803 or the “Prog” push-button inside the LMC 1020 for at least 5 seconds. The red LED inside the LMC 1020 flashes, to indicated that you are in programming mode for a time period of 3 minutes.

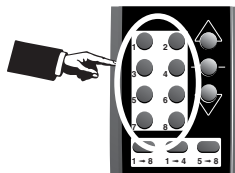
*Nb : You can exit from this mode at any step a, b, c (see below “exit from programming mode”).*

**1) To assign a channel on the LMC 1020** (the product is initially configured to operate with the IRT 103 transmitter or the IRT 803 without channel selected) :

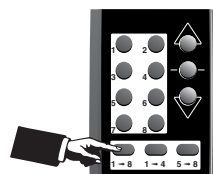
- Press the key **1** on the transmitter.
- ⇒ The LED of the LMC 1020 switches on.



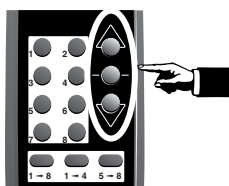
- Press one key from **1** to **8** corresponding to the selected channel.
- ⇒ The LED of the LMC 1020 blinks.



- If you wish a functioning with an IRT 103 (initial configuration), press the key **1** → **8**.
- ⇒ The LED of the LMC 1020 blinks.



**2) How to adjust the working time on the LMC 1020** (the product is initially configured to operate during 5 seconds).

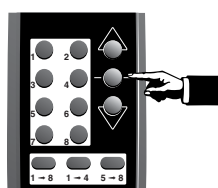


- With the IRT 803, press one of the keys ▲ or ▼ on the transmitter.

With a double push-button switch, push the corresponding push-buttons (UP or DOWN).



⇒ The LED on the LMC 1020 blinks quicker.



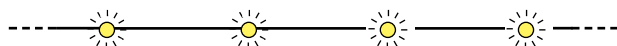
- Once the curtain is completely open or close : with an IRT 803, press immediately the STOP on the transmitter.

With a double push-button switch, push simultaneously the UP and DOWN push-buttons.



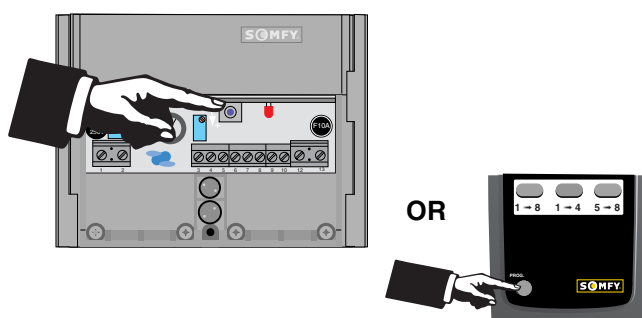
⇒ The LED on the LMC 1020 blinks normally.

**3) Remark :** if you wish to return to the initial configuration (IRT 103 channel, IRT 803 without channel and 5s supply time).



- Press the key ③ on the transmitter ⇒ the LED of the LMC 1020 lights on.

- Press the key ①→③ ⇒ the LED of the LMC 1020 blinks once.



**Exit from the programming mode :**

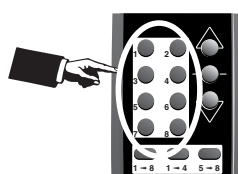
Press the push-button inside the GPS 1020 or the " PROG. " key on the transmitter for at least 5 seconds.

⇒ The LED of the GPS 1020 lights off.

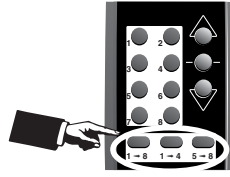
**D) Functionning :**

**1) With infra-red transmitter (IRT 803).**

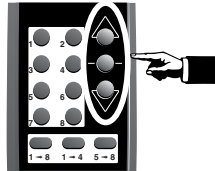
Point the transmitter at the Infra-red sensor which corresponds to the LMC 1020 you wish to control.



- If you wish to control one LMC 1020, press on the corresponding key ① to ③ of the channel you have selected.



- If you wish to control a group of LMC 1020, press on the corresponding key **1→4**, **5→8**, **1→8** (group of channels).



- Then you can control the LMC 1020 by pressing the keys **UP, DOWN or STOP**

**2) With manual controls (double push button switches) :**

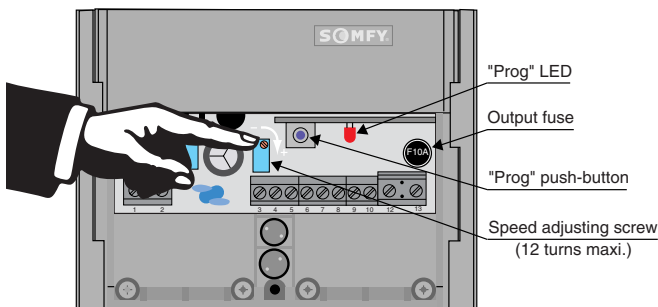
● **OPEN and CLOSE controls :**

- by pushing the corresponding push-buttons.

● **STOP control :**

- by pushing simultaneously the UP and DOWN push-buttons.

- By pushing a second time on the UP and DOWN push-buttons.



**3) Setting of the linear motor speed :**

For the LM 10 speed adjustment, turn the little screw (12 turns maximum) inside the LMC 1020 (see the drawing below).

To increase the speed, turn the screw in «+» direction.  
To decrease the speed, turn the screw in «-» direction.

## 2 - MALFUNCTIONS :

<p>The command is not sent</p>	<p><b>1-</b> Check the power supply of the LMC 1020. <b>2 -</b> Check the battery of the transmitter. <b>3 -</b> Check the good wiring of the receiver, the IR sensor and switches <b>4 -</b> Check the fuse of the receiver. <b>5 -</b> Check the programming.</p>
<p>The range of transmitting is decreasing or is variable</p>	<p><b>1 -</b> Check the battery of the transmitter. <b>2 -</b> Check the positioning of the sensor. <b>3 -</b> Check the environnement (the transmitter range can be affected by artificial lights or the wall colour).</p>