

LADEN

Service Information

Frontloader Washing machine

FL 1467

8580 915 29000

Last Modification: 21/10/08

Creation Date: 10/06/08

Spare Part List	2
Exploded View	4
Technical Data	6
Wiring Diagram	8
Circuit Diagram	10
Program Chart	12
Testprogram	21
Error Codes	22

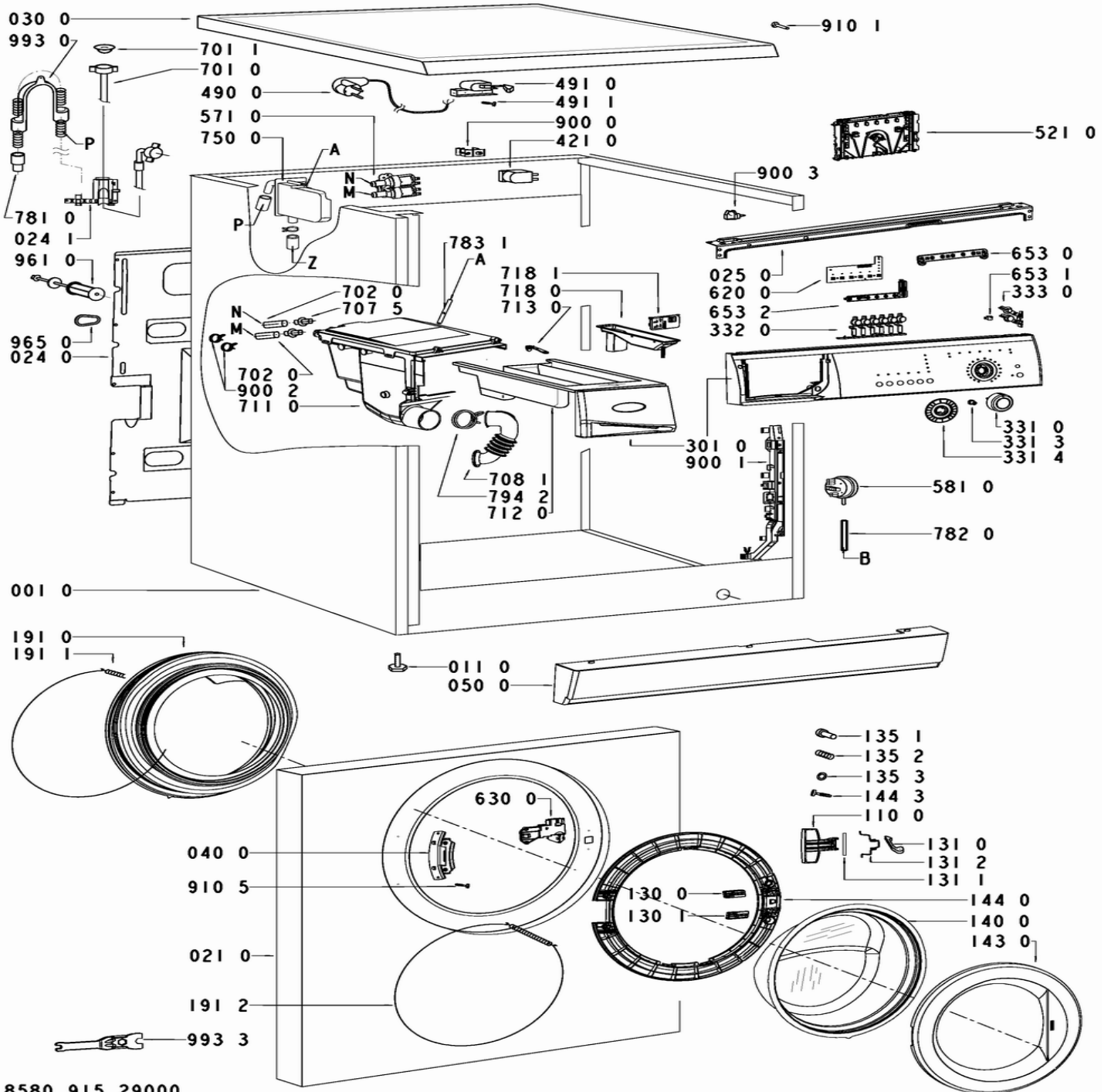
This document is only intended for qualified technicians who are aware of the respective safety regulations.
Subject to modifications

Spare Part List

Pos	12NC	Description
001 0	4812 440 11538	Cabinet
011 0	4812 462 48421	Adjust.foot
021 0	4812 440 11564	Front 50 l
024 0	4812 440 11544	Panel rear
024 1	4812 441 38021	Holder hose outlet
025 0	4812 440 11472	Support control board
030 0	4812 440 11473	Table top
040 0	4812 417 18787	Hinge BK
050 0	4812 440 10779	Plinth GW
061 0	4812 466 89017	Counter weight upper, Eureka 50-54l
061 1	4812 466 89034	Counter weight lower, 44/54 l, EUREKA
061 2	4812 310 39249	Mounting kit Counter weight
081 0	4812 466 48088	Shock absorber 1400
084 0	4812 466 58001	Silent bloc
086 0	4812 401 18894	Fixation eureka
086 2	4812 401 18412	Stopper
110 0	4812 498 18701	Handle door
130 0	4812 417 28047	Plate Door lock
130 1	4812 417 28108	Plate Doorlock Lower
131 0	4812 417 28046	Lock Door
131 1	4812 417 28045	Pin Door Lock
131 2	4812 492 58022	Spring Door Lock
135 1	4812 498 18262	Door safety erk
135 2	4812 491 48004	Spring Door Safety
135 3	4812 290 68153	Holder adjust. Door Safety
140 0	4812 450 59812	Door glass DELTA EUREKA
143 0	4812 440 11577	Glassdoor frame BK
144 0	4812 440 11575	Frame door glas
144 3	4812 502 18669	Screw; 4.0x12
191 0	4812 460 68633	Door bellow Eureka 473 50 lt
191 1	4812 492 18028	Strap Eureka
191 2	4819 530 58059	Ring
200 0	4801 111 00364	Wash unit
223 0	4812 418 48987	drum lifter 54LT
271 0	4819 358 18152	BELT PV 1248 J5
272 0	4812 528 58044	Pulley Eureka/MR+HR
272 3	4812 502 18817	Screw pulley M8x23 Eureka
301 0	4801 111 00394	Control panel + handle drawer
331 0	4812 414 58316	Knob timer
331 3	4812 414 58307	Spring Knob timer
331 4	4812 414 58317	Knob timer ring-VB 06
332 0	4812 410 29477	Push button EBL 6 Opt.
333 0	4812 513 18177	Push button start-reset
400 0	4801 111 00362	Motor ACC U126G65 1400
400 1	4812 502 18816	Screw P8x50
409 0	4812 362 48442	Brush,carbon ACC sub 481281719419
421 0	4812 121 18285	Filter
430 0	4812 360 18559	Pump
451 0	4812 259 28919	Heating element 2050W, 230V + NTC
480 0	4812 321 78419	Cable DOM-MOT 7-EU/VB

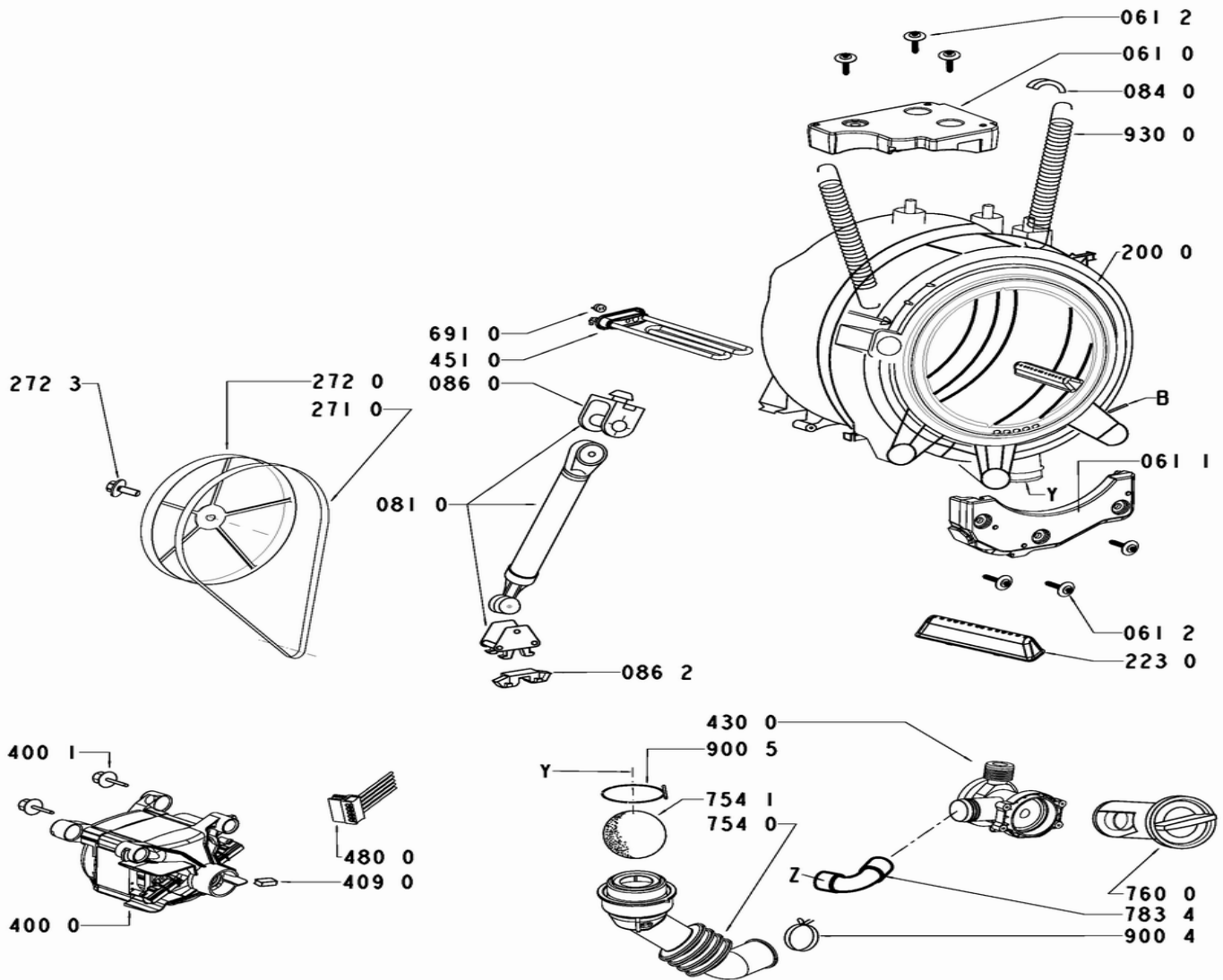
Pos	12NC	Description
490 0	4819 321 18136	Cable mains 3X1620mm SA
491 0	4812 321 28367	Strain relief.
491 1	4812 502 38152	Screw 4.8x19
521 0	4801 111 00303	Control unit DOMINO I, programmed
521 0	4801 111 01277	Control unit DOMINO,C11,basic
571 0	4812 271 28558	Valve,magnet
581 0	4812 271 28585	Pressostat 50/25 INVENS.
620 0	4812 239 58039	Module E2/6 Opt. (E3/4 Opt.)
630 0	4812 280 58048	Door lock Rold DA069516
653 0	4812 134 18064	Light guide prog. flow
653 1	4812 134 18047	Guide,light Start low
653 2	4812 134 48369	Light guide 6 opt.
691 0	4812 282 19485	Sensor NTC
701 0	4819 530 28848	Hose, inlet
701 1	4819 466 69704	Gasket and filter
702 0	4812 530 29405	Hose valve-dispenser
707 5	4812 310 19102	Nozzle
708 1	4812 530 49392	Bend disp.-tub Eureka
711 0	4812 418 68391	Dispenser
712 0	4812 418 68389	Drawer
713 0	4812 418 68382	Safety device
718 0	4812 526 48226	Siphon
718 1	4812 418 89066	Separator
750 0	4812 530 48139	Chamber,expand.
754 0	4812 530 29495	Drainhose tub-pump Eureka
754 1	4812 530 28832	Lock eco
760 0	4812 480 58385	Filter pump/see SB 4812 712 40386
781 0	4801 111 00312	Hose draining outlet,int.
782 0	4812 530 29497	Hose Pressostat
783 1	4812 530 29473	Steam hose Exhaust chamber
783 4	4812 530 29392	Hose pump/tank
794 2	4812 401 18549	Clamp hose
900 0	4812 255 18298	Holder outlet hose
900 1	4812 290 88123	Bracket eureka.
900 2	4812 401 18501	Clamp hose 19.2 mm
900 3	4812 401 18446	Cable clamp
900 4	4812 401 18414	Clamp hose.
900 5	4819 401 18529	Clamp hose
910 1	4812 502 48344	Screw
910 5	4812 903 08196	Screw M 5X14-Z; M 5X14-Z
930 0	4812 492 38421	Spring suspension Eureka
961 0	4819 532 68829	Spacer 44, 50, 58 l
965 0	4812 466 68545	Cover BK/WH
993 0	4819 530 29028	U Curve for outlet hose
993 3	4812 395 58004	Tool

Exploded View



8580 915 29000

Exploded View



8580 915 29000

Technical Data

Dimensions + Weight

Product dimensions	
Height	85 cm
Width	59.5 cm
Depth	59 cm
Weight	
net	72 kg

Electrical base data

Voltage	230 V \pm 10 %
Frequency	50 Hz
Fuse	10 A
Power Consumption	~2.3 kW

Drum data

Volume	54 l
Wash speed	54 tr/min
Spinning	
max.	1400 tr/min

Pressostat

Level1	11 - 12/14
Overflow	11 - 16

Door lock

Kind of switch	Commutez avec le réchauffeur de PTC du bimétal
Nominal voltage	230 (90 - 264) V
Locking time	\leq 6 s
Unlock time	~85 s

Inlet valve

Rated flow	(1.5 - 5 bar)	8 l/min
Pressure range		0.3 bar - 10 bar
Nominal voltage		220 V - 240 V
Frequency		50 Hz
Nominal resistance	(20 °C)	3.8 k Ω

Drain pump

Nominal voltage		220 V - 240 V
Total power		30 W
Frequency		50 Hz
Resistor (coil)		160 Ω
Capacity	(0.55 - 1 m)	14 \pm 2 l/min

Heating element

Nominal voltage	230 + 10%, -15% V
Total power	2050 W
Resistance (20 °C)	24 Ω
Leakage current	< 0.8 mA
NTC sensor	
Resistance NTC	

0 °C	35.9	kΩ
30 °C	9.8	kΩ
40 °C	6.6	kΩ
50 °C	4.6	kΩ
60 °C	3.2	kΩ
70 °C	2.3	kΩ
95 °C	1.1	kΩ

Motor

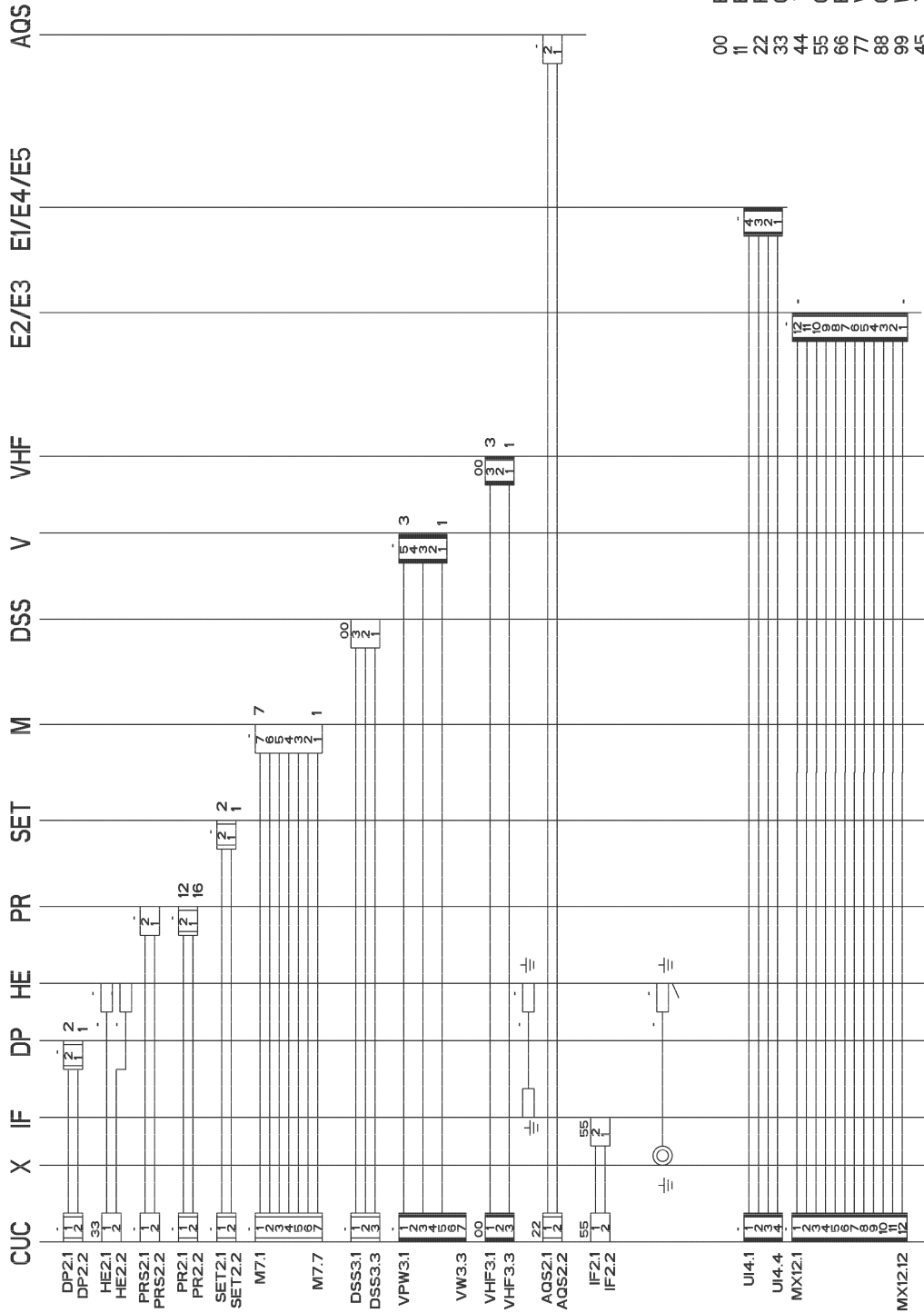
Resistance contacts	(20 °C)
Stator (full field)	1.20 Ω
Stator (tapped field)	0.51 Ω
Rotor	1.72 Ω
Tacho generator	184 Ω

Control unit

Type	DOMINO
Nominal voltage	230 - 240 V
Frequency	50 Hz
Output control unit	

Moteur	M7.6 - DSS3.2	>40 V
Anti-débordement	AQ2.2 - DSS3.2	230 V
- à la pompe	AQ2.1 - DSS3.3	230 V
CTN	non mesurable	—
Pompe	DP2.1 - DP2.2	230 V
Sécurité de porte	DSS3.1 - DSS3.3	230 V
Pressostat	E4 - E2	230 V
- vide	PR2.1 - E2	230 V
- plein	PR2.2 - E2	230 V
Electrovanne (Rast 2.5)	V2.1 - V2.2	>170 V
Options	non mesurables	—

Wiring Diagram

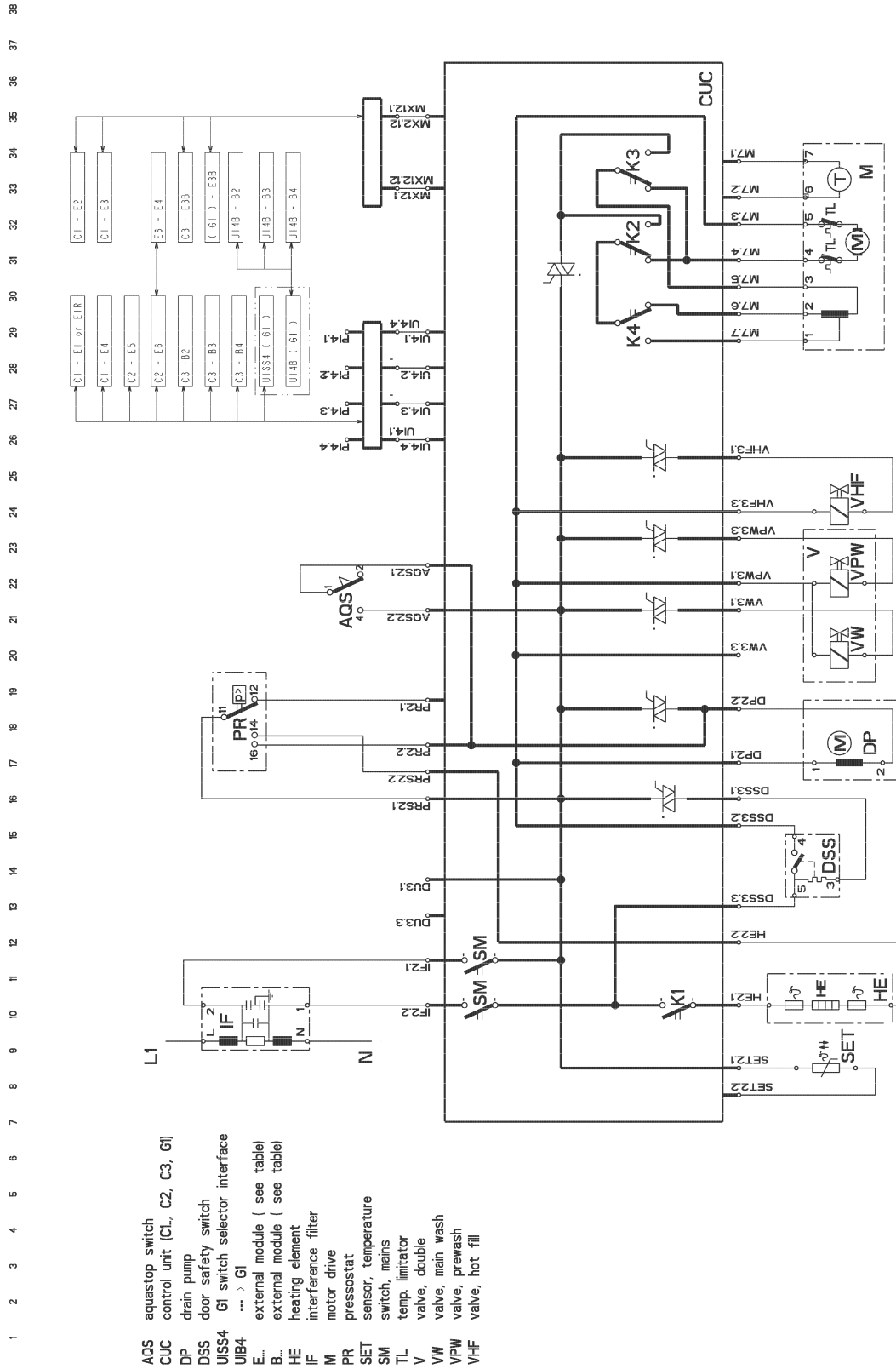


461971402641

Legend

00	Black
11	Brown
22	Red
33	Orange
44	Yellow
55	Green
66	Blue
77	Violet
88	Grey
99	White
45	Yellow/Green

Circuit Diagram



461971402231

Legend

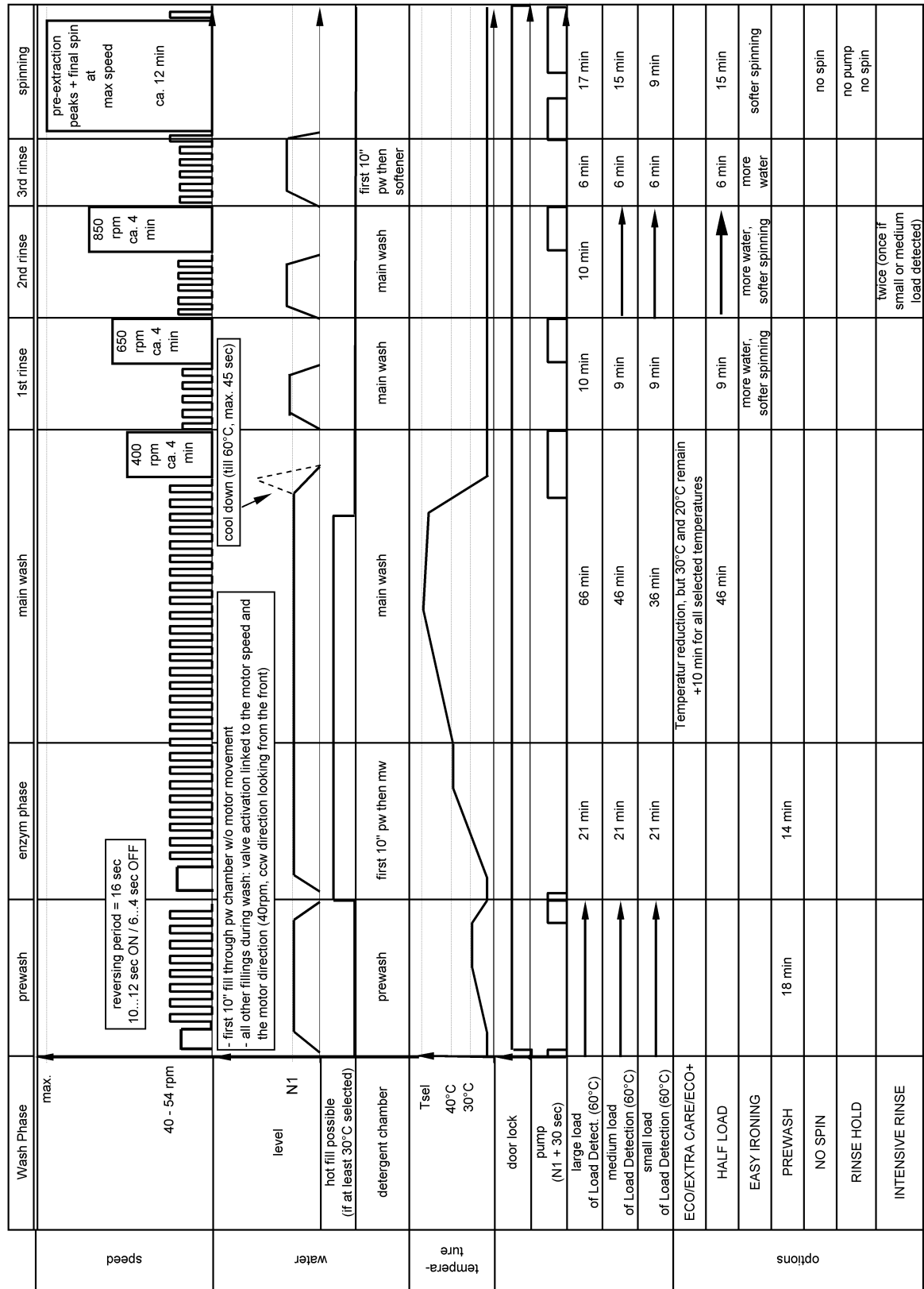
AQS	aquastop switch
CUC	control unit (C1., C2, C3, G1)
DP	drain pump
DSS	door safety switch
UISS4	G1 switch selector interface
UIB4	---> G1
E...	external module (see table)
B...	external module (see table)
HE	heating element
IF	interference filter
M	motor drive
PR	pressostat
SET	sensor, temperature
SM	switch, mains
TL	temp. limitator
V	valve, double
VW	valve, main wash
VPW	valve, prewash
VHF	valve, hot fill

Program Chart

4619 714 18321

Wash Cycle of Cotton ≥ 50°C, Extra Care

Domino Eureka 473



Program Chart

4619 714 18321

Wash Cycle of Cotton ≤ 40°C, Jeans/Baby

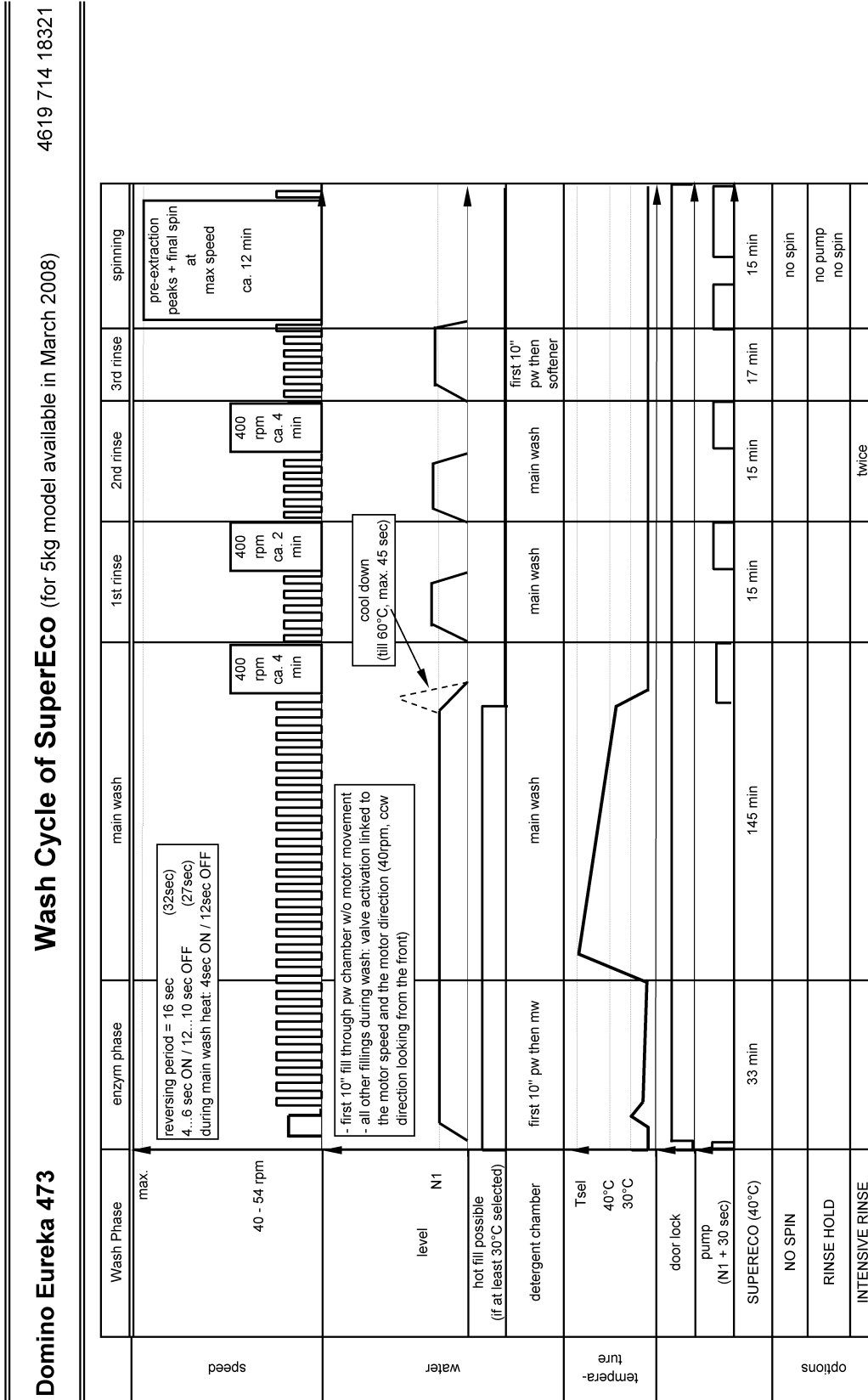
Domino Eureka 473

Wash Phase	prewash	enzym phase	main wash	1st rinse	2nd rinse	spinning
speed	max. 40 - 54 rpm					pre-extraction peaks + final spin at max speed ca. 12 min
water	reversing period = 16 sec 10...12 sec ON / 6...4 sec OFF - first 10" fill through pw chamber w/o motor movement - all other fillings during wash: valve activation linked to the motor speed and the motor direction (40rpm, ccw direction looking from the front)					
temperature	level N1 hot fill possible (if at least 30°C selected)	first 10" pw then mw	main wash	main wash	10" pw then softener	
	detergent chamber					
	40°C 30°C					
	door lock					
	pump (N1 + 30 sec)					
	large load of Load Detection (40°C)	21 min	49 min	16 min	17 min	17 min
	medium load of Load Detection (40°C)	21 min	24 min	11 min	12 min	15 min
	small load of Load Detection (40°C)	21 min	12 min	10 min	7 min	6 min
	ECO/EXTRA CARE		Temperature reduction but 30 °C and 20 °C remain/ + 10 min for all selected temperatures			
	HALF LOAD		24 min	11 min		15 min
	COLD WASH	heating until 20 °C	heating until 20 °C			
	EASY IRONING			more water, softer spinning	more water, softer spinning	softer spinning
	PREWASH	18 min				
	NO SPIN					no spin
	RINSE HOLD					no pump no spin
	INTENSIVE RINSE			twice		

Jeans/Baby = Cotton 40°C with integrated intensive rinse option

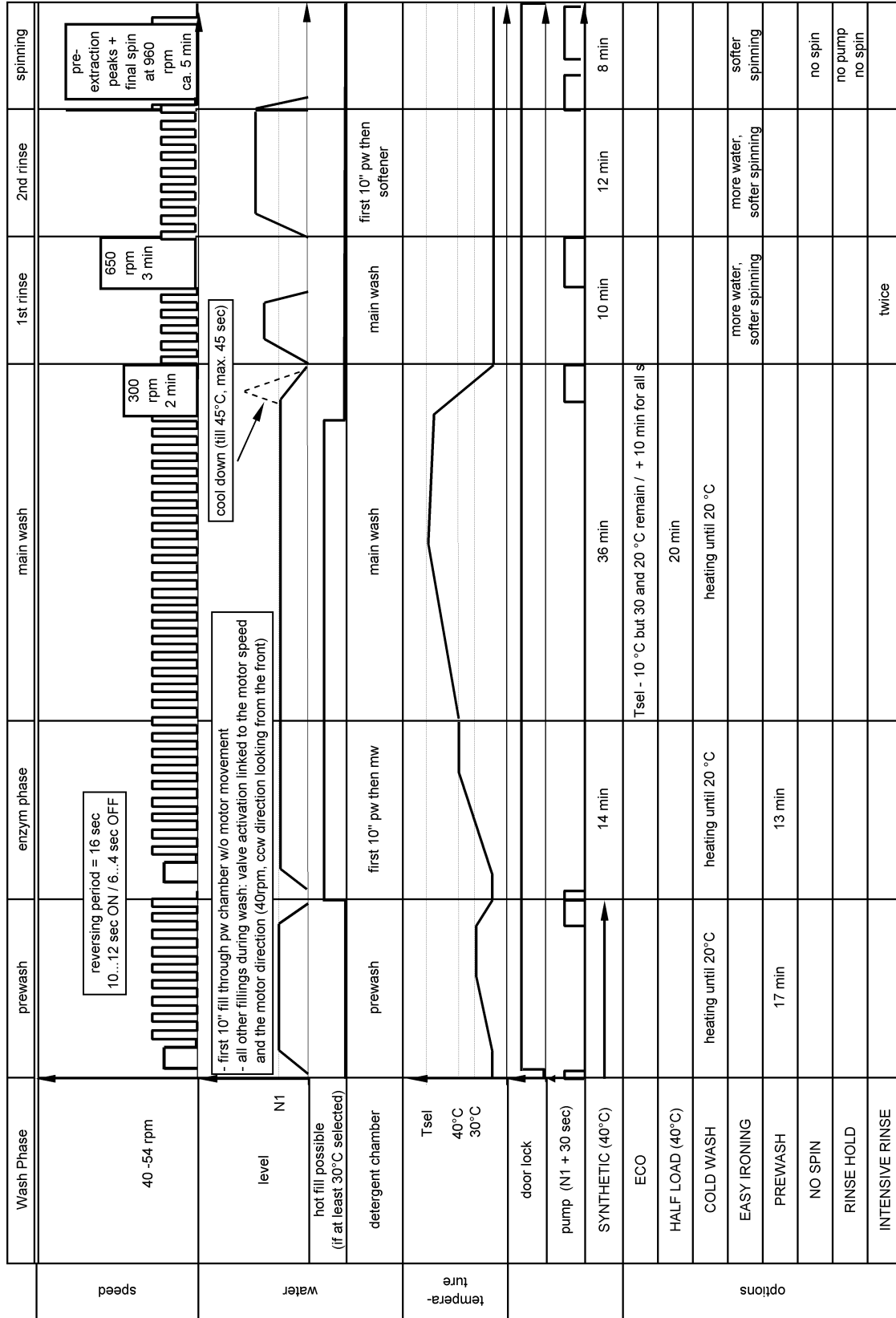
easy ironing and intensive rinse are not selectable
The option LED of intensive rinse doesn't light.

Program Chart



Program Chart

Domino Eureka 473 Wash Cycle of Synthetic/Easy Care, Sport/Leisure 4619 714 18321



Sport = Synthetic 30°C with integrated prewash option

The options prewash and eco are not selectable

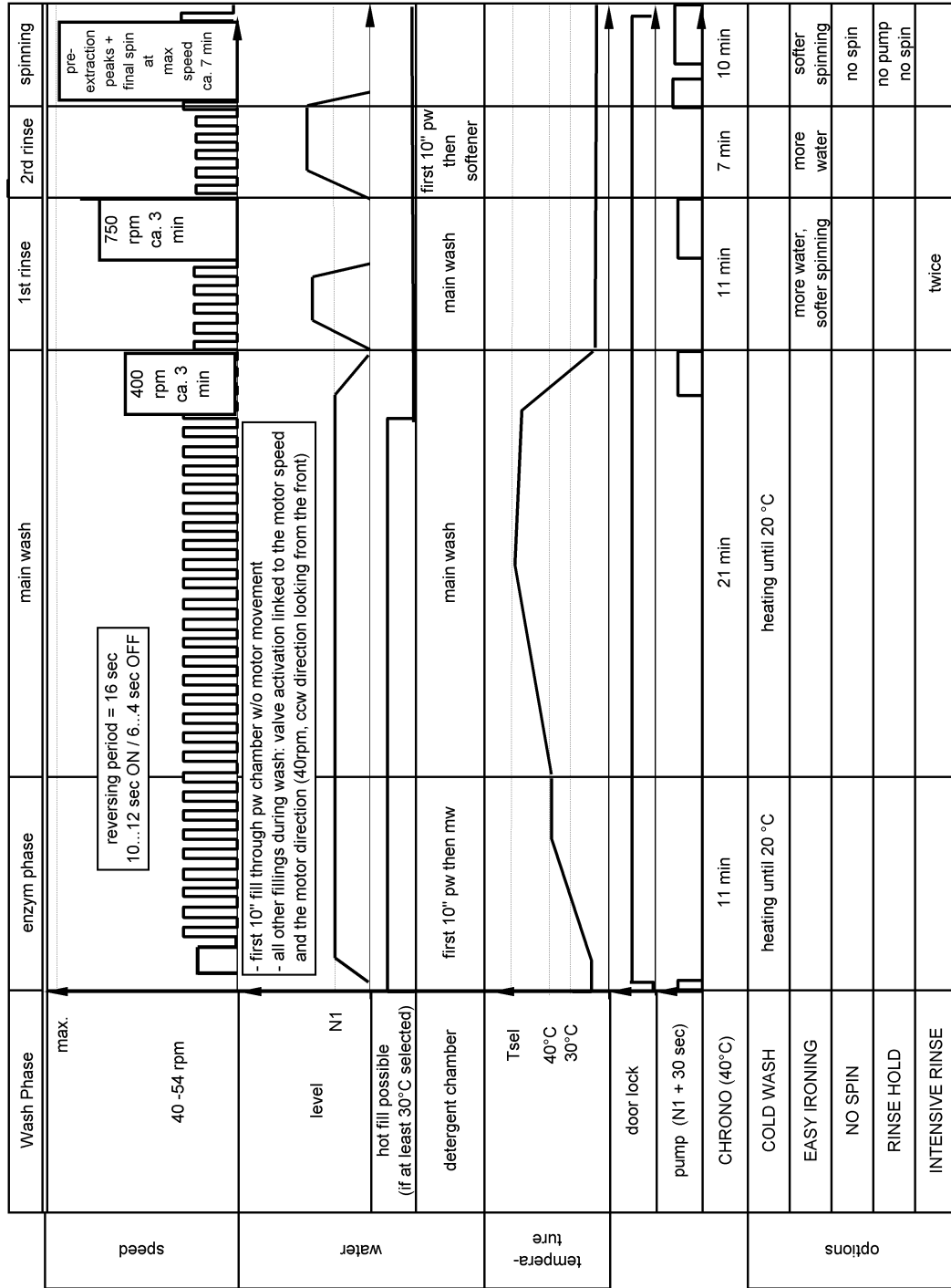
The option LED of prewash is off after selecting the cycle but after program start the program sequence lamp for prewash lights up.

Program Chart

4619 714 18321

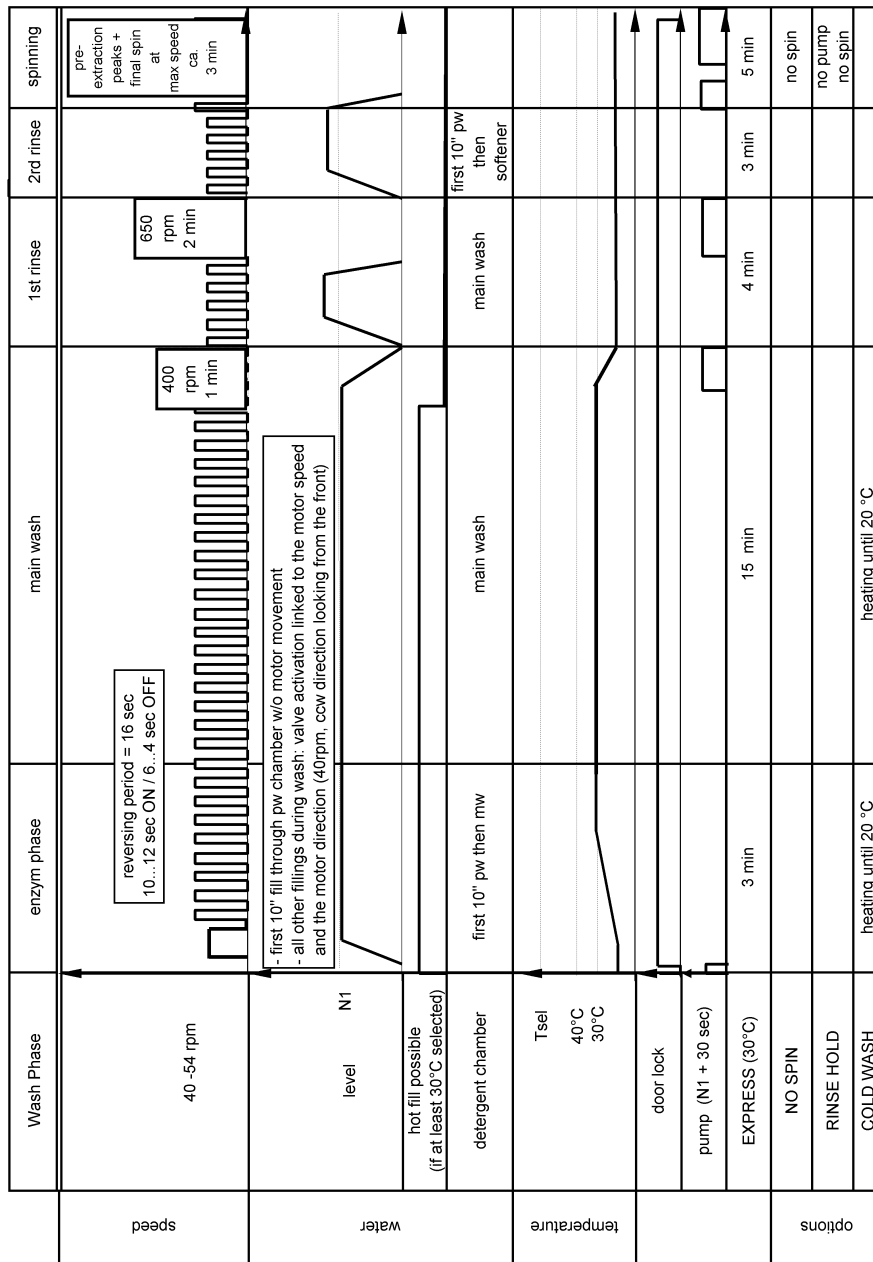
Wash Cycle of Chrono/Daily (60min)

Domino Eureka 473

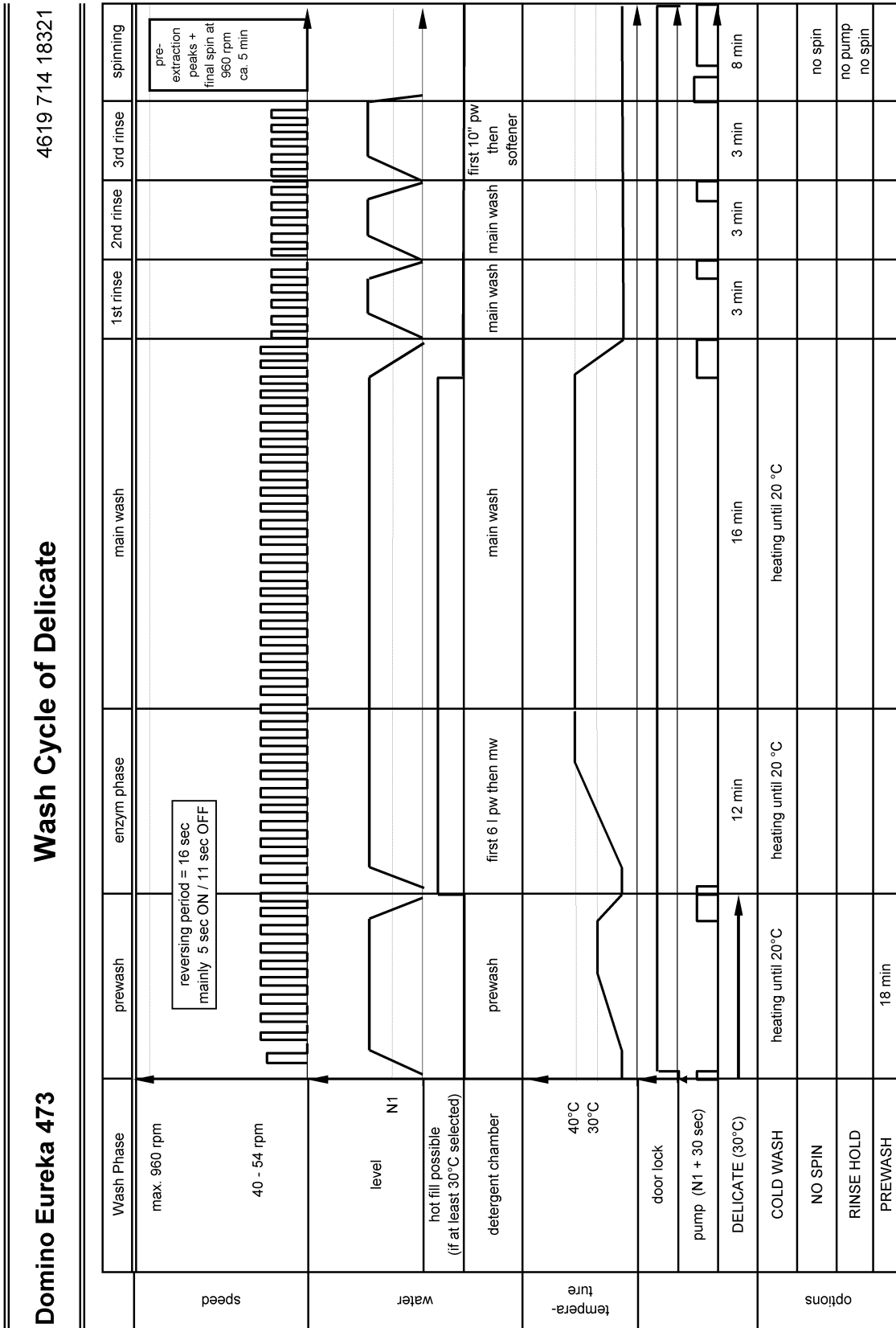


Program Chart

Domino Eureka 473 Wash Cycle of Express/Quick Wash/Chrono30/Superrapid (30 min) 4619 714 18321



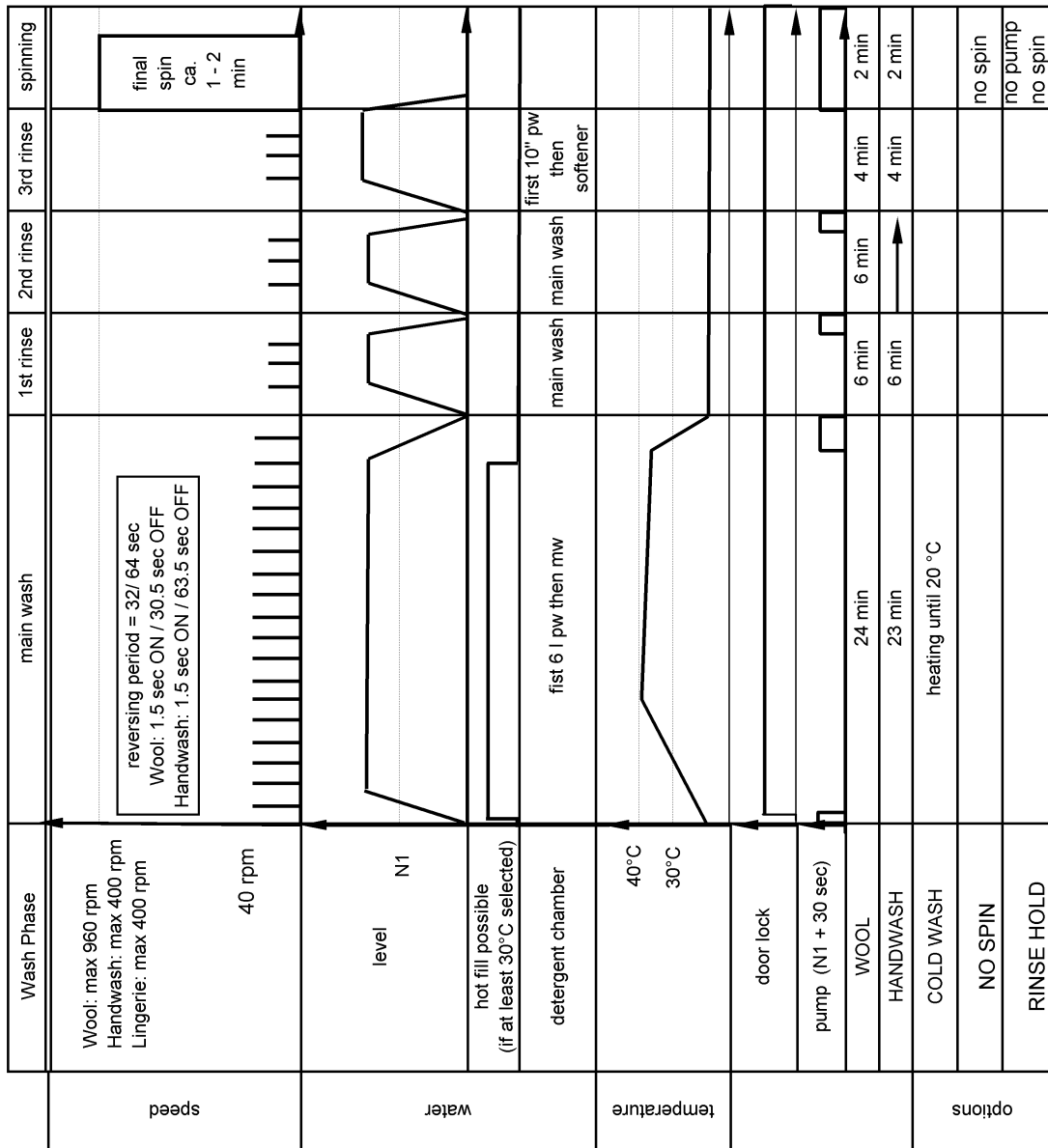
Program Chart



Program Chart

4619 714 18321

Domino Eureka 473 Wash Cycle of Wool, Handwash, Lingerie



Lingerie: Handwash with default setting 30°C (40°C selectable)

The options cold wash, rinse hold and spin reduction are selectable

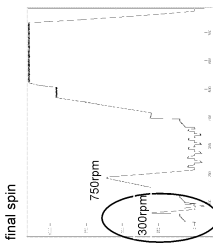
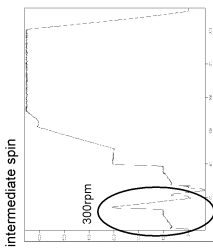
Program Chart

4619 714 18321

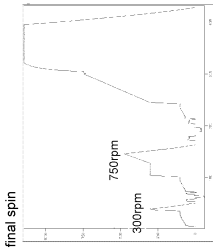
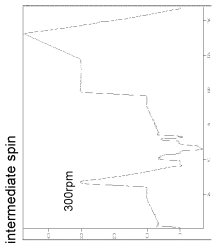
Spin Profiles

Domino Eureka 473

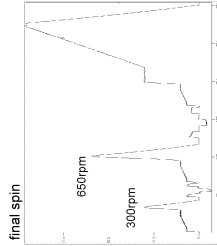
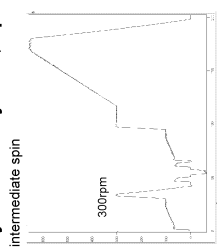
Cotton, Jeans, Baby (large load detection)



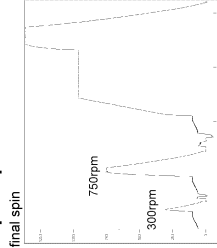
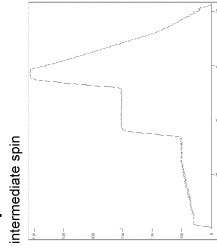
Chrono/Daily



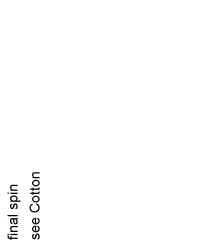
Synthetic/Easy Care, Sport/Leisure



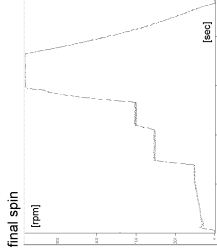
Express/Quick Wash/Chrono30/Superrapid



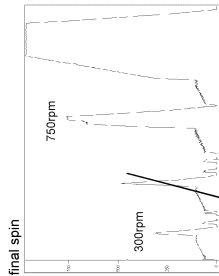
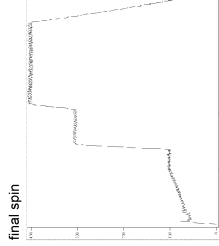
SuperEco



Wool









Handwash, Lingerie



Testprogram

1. Switch ON the appliance
2. Close the Door
3. Select the first mechanically available position of the rotary program selector on the left of the OFF position (usually "DRAIN" or "SPIN")
4. Press Push button (PB) Reset 4 times within 5 seconds
5. Go to the next step press PB Reset twice






Attention: Use the test program only without laundry!

LED Status	Digits *	Description of the Program Flow	Check to perform
	-- 0	The door is locked. The CUC is performing the Selftest.	CUC detects • F02, F05, F08, F12, F13, F14, F15, F21, F23, F26
	-- 1	Fill 15° hot valve (only if hot fill appliance) Fill 15° in prewash (PW) Fill 15° in mainwash (MW) Fill 15° in PW + MW (Softener) Fill by MW to wash level. Motor is reversing.	Technician: • Check the valve activation • Check the dispensing into the dispenser • Check the pressure switch
	-- 2	The heating element is switched ON. Motor is reversing.	Technician: • Check heating element activation • Check if the motor is reversing CUC detects: • F06, F07, F27
	-- 3	The drain pump is switched ON until the wash level = OFF + 5° motor is reversing.	Technician: • Check drain pump activation • Check pressure switch operation • Check if the motor is reversing CUC detects: • F06, F07, F27, F03
	-- 4	The motor is driven to maximum speed. Drain pump is ON.	Technician: • Check if the motor is running at max. speed • Check drain pump activation CUC detects: • F28
	-- 5	Motor is switched OFF. Door is unlocked.	Technician: • Check if the door is unlocked CUC detects: • F13

- Digits 1,2, (the left on) are executing an animation










DOMINO 4619 714 04651

Error Codes

Failure Indication		Explanation and Recommended Procedure
On Status LEDs	On Digits if available	
	<p>Remaining Time</p>	<p>No water detected entering machine or pressure switch trip not detected.</p> <p>If after 6 minutes the control does not detect water entering machine and then valves will be turned off and the LED Water Tap will be switched ON.</p> <p>The Control is in Pause Mode. If it was possible to remove the failure, by pushing PB Start the appliance will restart.</p> <p>Potential Causes</p> <ul style="list-style-type: none"> • If there is no water in the unit: <ul style="list-style-type: none"> • Make sure that both valves at the water source(s) are turned on all the way. • Check for plugged or kinked inlet hoses or plugged screens in the inlet valves. • Verify inlet valve operation. • If there is water in the unit: <ul style="list-style-type: none"> • Pressure switch hose is in good condition and properly connected to tub and pressure switch. • Verify there is not a siphon problem. • Verify wire harness connections to; inlet valves, pressure switch and central control unit (CUC). • Check all hoses for possible leaks. • Verify pressure switch operation. • Verify CUC operation.
	<p>FA</p> <p>F02</p>	<p>Aquastop Failure</p> <p>If the aquastop contact on the bottom tray of the appliance is closed for more than 30' an aquastop failure will be detected. In aquastop condition, the door will remain locked and the drain pump will run constantly.</p> <p>Potential Causes</p> <ul style="list-style-type: none"> • If there is water in the bottom tray of the appliance: <ul style="list-style-type: none"> • Check all hoses for any leakage. • Check if there was an overfoam due to too much detergent used. • Check the tub for any leakage. • If there is no water in the bottom tray <ul style="list-style-type: none"> • Check if the aquastop switch has a short circuit. • Check if the aquastop wiring is properly connected. • Verify CUC operation. (Check also for F26: Pump Triac Short Circuit is causing this code.)
	<p>Remaining Time</p> <p>During test program</p> <p>F03</p>	<p>Long Drain</p> <p>If the drain time exceeds 4 minutes, the LED clean Filter is turned ON.</p> <p>The control is in Pause Mode. If it was possible to remove the failure, by pushing PB Start the appliance will restart</p> <p>Potential Causes</p> <ul style="list-style-type: none"> • Check the drain hose and make sure it is not blocked or kinked • Check the electrical connections at the pump and make sure the pump is running. • Check the drain pump filter for foreign objects. • Check the electrical resistance of the drain pump. • The failure ca also be generated by too much foam in wash phase. Read also failure description F18.
	<p>F04</p>	<p>Too Long Heat Time</p> <p>If the water temperature is not increasing over 35°C during 40 minutes of the first heating step in the cycle the CUC will display this Error.</p> <p>Potential Causes</p> <ul style="list-style-type: none"> • Check the electrical resistance of the heating element. • Check Wire Harness connections to the heating element, NTC and CUC. • Check the electrical resistance of the NTC (failure can also occur, when NTC resistance is not changing with temperature)
	<p>F05</p>	<p>Water Temperature Sensor Error</p> <p>If during the water heating step in the wash cycle, the water temperature sensor (NTC) value is out of range, the F05 error code will be displayed.</p> <p>Potential Causes</p> <ul style="list-style-type: none"> • Check the NTC resistance. • Check connections to the NTC and CUC.








DOMINO 4619 714 04651

Error Codes

	<p>F06</p>	<p>Drive Motor Tachometer Error</p> <p>The control is unable to properly detect motor speed (several times) and the machine will shut down. If a failure occurs during high speed spin the door will be unlocked after the drum has stopped rotating.</p> <p>Potential Causes</p> <ul style="list-style-type: none"> • Check wire harness connections between the motor and CUC. • Check the resistance of the tachometer circuit on the motor. • Check resistances of the motor windings.
	<p>F07</p>	<p>Motor Control Triac Error</p> <p>The main control has detected a short circuit in the motor control triac. If a failure occurs during high speed spin the door will be unlocked after the drum has stopped rotating.</p> <p>Potential Causes</p> <ul style="list-style-type: none"> • Check CUC by running Test Program.
 	<p>F08 F12</p>	<p>Heater Circuit Error</p> <p>The main control has detected a heater circuit failure. This failure modes are checked before the cycle starts and after the spinning steps.</p> <p>Potential Causes</p> <ul style="list-style-type: none"> • Check the resistance of the heater connectors to the ground. • Check the resistance of the heater. • Check the wiring connectors to the heater and CUC. • Check the CUC.
<p>LED Door open flashing for 10"</p>  	<p>Only during test program</p> <p>F13</p>	<p>Door Open LED flashing after the cycle is started</p> <p>If the CUC is not able to lock the door of the washer after program start within 10", the door open LED will flash for 10".</p> <p>If the CUC is not able to unlock the door at the end of program within 240", this code will be displayed. After switch OFF and ON, CUC will again try to open the door lock for 240". During this phase all LEDs will be OFF. If this is again not successful, Code will appear after 240".</p> <p>Potential Causes</p> <ul style="list-style-type: none"> • Check if the door is closed properly. • Check if there is a mechanical problem on the door lock system. • Check the wiring/harness between the CUC and the door lock. • Start the Test Program. If the problem persists the error Code F13 will be displayed.
	<p>F14</p>	<p>EEPROM Error</p> <p>The CUC receives it's data from an EEPROM on board the CUC. If there is an error reading this data it will cause this failure indication.</p> <p>Potential Causes</p> <ul style="list-style-type: none"> • A power glitch (mains disturbance) may cause this error: Run the Test Program. This will perform a complete check of the EEPROM. If the failure is detected during the Test Program replace the CUC.
	<p>F15</p>	<p>Drum Up Circuit Missing (only for TOPLOADERS with DRUM UP Circuit)</p> <p>If the CUC is not detecting the Drum Up switch closing during motor rotation this failure is displayed. This error is detected ONLY during the Test Program.</p> <p>Potential Causes</p> <ul style="list-style-type: none"> • Check the position of the electromagnetic device. • Check the position of the reed sensors. • Check the resistance of the reed sensor. • Check the wiring connection between the reed sensor and the CUC.
	<p>F18</p>	<p>Foam detected During the Wash Cycle</p> <p>If the CUC is not able to drain out the water after washing or not able to spin after several trials this alarm Code is displayed.</p> <p>Potential Causes</p> <ul style="list-style-type: none"> • Customer used too much detergent. • Check if there is any problem with the pump hoses. • Check the pump for foreign objects. • Check the electrical resistance of the pump. • Check the electrical resistance of the pressure switch. • Check if pressure switch hose is in good condition and properly connected to tub and pressure switch. • Verify there is not a syphon problem.

DOMINO 4619 714 04651

Error Codes

	<p>F21</p>	<p>User Interface Error (detected only with display user interfaces)</p> <p>If the communication between user interface module and CUC is disturbed, this Error is displayed. If the failure is displayed on the digits the display module is not able to "talk" to the CUC. If the failure is displayed on the status LED the CUC is not able to contact the Display module.</p> <p>Potential Causes</p> <ul style="list-style-type: none"> • Check wiring connection to the display module. • Check display module. • Check CUC.
	<p>F23</p>	<p>Pressure switch Failure</p> <p>If the CUC detects during the wash cycle that the pressure switch contact for the wash level and the pressure switch level for the heater safety are ON or OFF simultaneously for 10" this failure will be displayed.</p> <p>Potential Causes</p> <ul style="list-style-type: none"> • Check the resistance of the pressure switch contacts. • Check the wiring of the connection to the pressure switch and to the CUC. • Start the Test Program. If the problem persists F23 will be displayed. • Check points of F08 / F12 (Failure can be caused also by Heater circuit failure).
	<p>F24</p>	<p>Overflow Failure</p> <p>If the overflow contact on the pressure switch is closed for more than 60" the overflow failure will be indicated. In this overflow condition, the Door will remain locked and the drain pump will run constantly.</p> <p>Potential Causes</p> <ul style="list-style-type: none"> • Check the drain hose and make sure it is not blocked or kinked. • Check Wire Harness connections to the drain pump, pressure switch, and CUC. • Check/clean drain pump filter of foreign objects. • Check for drain pump failure. • Check the inlet valve for proper shut off. • Check the pressure switch for proper operation.
	<p>F26</p>	<p>Pump Driver Failure</p> <p>If the CUC detects that the triac of the pump is defective it will display this failure.</p> <p>Potential Causes</p> <ul style="list-style-type: none"> • Check the resistance of the pressure switch contacts. • A failure of the pressure switch could also cause the Code. • If OK. Start test program to check the CUC. If the failure occurs replace the CUC.
	<p>Only during test program</p> <p>F27</p>	<p>Reversing relay failure</p> <p>If the CUC detects that the motor is possible to rotate only in one direction this failure is displayed.</p> <p>Potential Causes</p> <ul style="list-style-type: none"> • Check the harness to the motor. • Check the CUC.
	<p>Only during test program</p> <p>F28</p>	<p>Tapped Field Failure</p> <p>If the CUC is not able to switch ON the tapped field of the Motor, this failure code is displayed.</p> <p>Potential Causes</p> <ul style="list-style-type: none"> • Check if the correct motor is build in. • Check the resistance of the fields of the motor. • Check the harness between Motor and CUC. • If the points above are OK replace the CUC.
	<p>F31</p>	<p>Blocked Drum Detected (only for Top Loader Appliances)</p> <p>CUC detects problems with driving of the motor at the beginning of the cycle or after pause mode when door lock have been unlocked.</p> <p>Potential Causes</p> <ul style="list-style-type: none"> • Check if the Drum door are properly closed • Check the Belt position • Check the F06 Case

DOMINO 4619 714 04651

Error Codes

	<p>Only during test program</p> <p>F40</p>	<p>MEB Communication Failure / Low Ambient Temperature</p> <p>If there is no communication between CCU and the Myst Extension Board (MEB) or if the ambient temperature is lower than 5 °C this failure Code will be displayed.</p> <p>Potential Causes</p> <ul style="list-style-type: none"> • Check if there is power at the MEB CU2 connector. • Check if the communication cable is connected to the MEB and to the UI. • Check if the ambient temperature is higher than 5 °C. • If the points above are OK replace the MEB.
	<p>Only during test program</p> <p>F41</p>	<p>MEB Control Board Failure</p> <p>If there is any failure detected at the Myst Extension Board (MEB) this failure Code will be displayed.</p> <p>Potential Causes</p> <ul style="list-style-type: none"> • Check if there is power at the MEB CU2 connector. • If the point above is OK replace the MEB.
	<p>Only during test program</p> <p>F42</p>	<p>Steamer Component Failure</p> <p>If there is any failure at the steamer component or steamer NTC, this failure Code will be displayed.</p> <p>Potential Causes</p> <ul style="list-style-type: none"> • Check the harness between Steamer, NTC and MEB. • Check if there is no fuse or resettable thermostat at open state. • Check the electrical resistance of the Steamer Heater. • Check if the NTC is not at open or short-circuit state. • Check if the steamer hoses are connected. • Check if the steamer tube is not blocked. • If the points above are OK replace the steamer component.
	<p>Only during test program</p> <p>F43</p>	<p>Steam Valve Failure</p> <p>If there is no water supply or the steamer valve does not open this failure Code will be displayed.</p> <p>Potential Causes</p> <ul style="list-style-type: none"> • Check if water supply for the appliance is not closed. • Check if the cable between MEB and valve is connected. • Check if the hoses to the valve are connected with no leakage. • If the points above are OK replace the valve. • Re-test the machine and if the failure persists replace the MEB.

Domino Class B safety functions:

- 1) **Wash Level activated during selection mode:**
The Door is locked and Drain routine is started. If the Drain Pump is not defective the Door will be unlocked after Level N0 + 30seconds;
Led (display) status: normal indication
If Drain Pump is defective Pump failure will be retriven.
- 2) **Drum Speed is higher than 60rpm in selection mode:**
When the speed > 60 rpm, then after 4 seconds, the doorlock is activated.
Led (display) status: normal indication
- 3) **Water High Temperature in selection or pause mode:**
If temperature which NTC sensor is detecting is higher than 50°C Door Lock will kept locked.
Led (display) status: normal indication

DOMINO 4619 714 04651