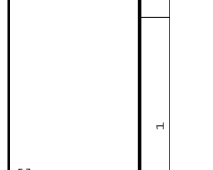
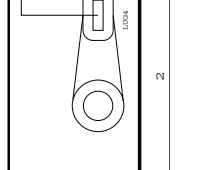
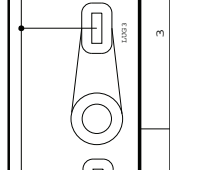
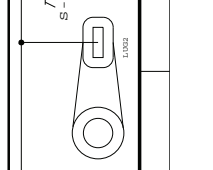
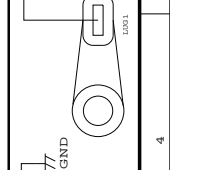
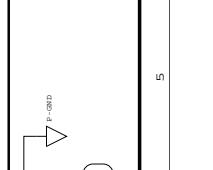
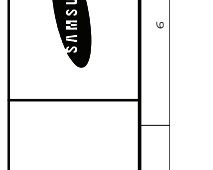
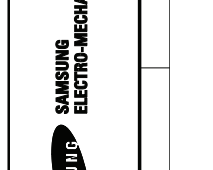
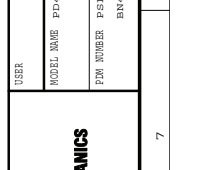
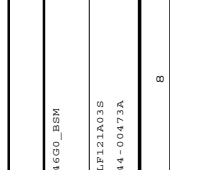
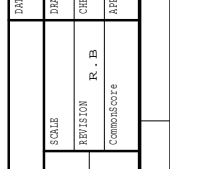
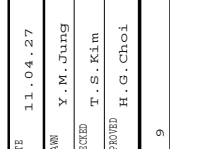
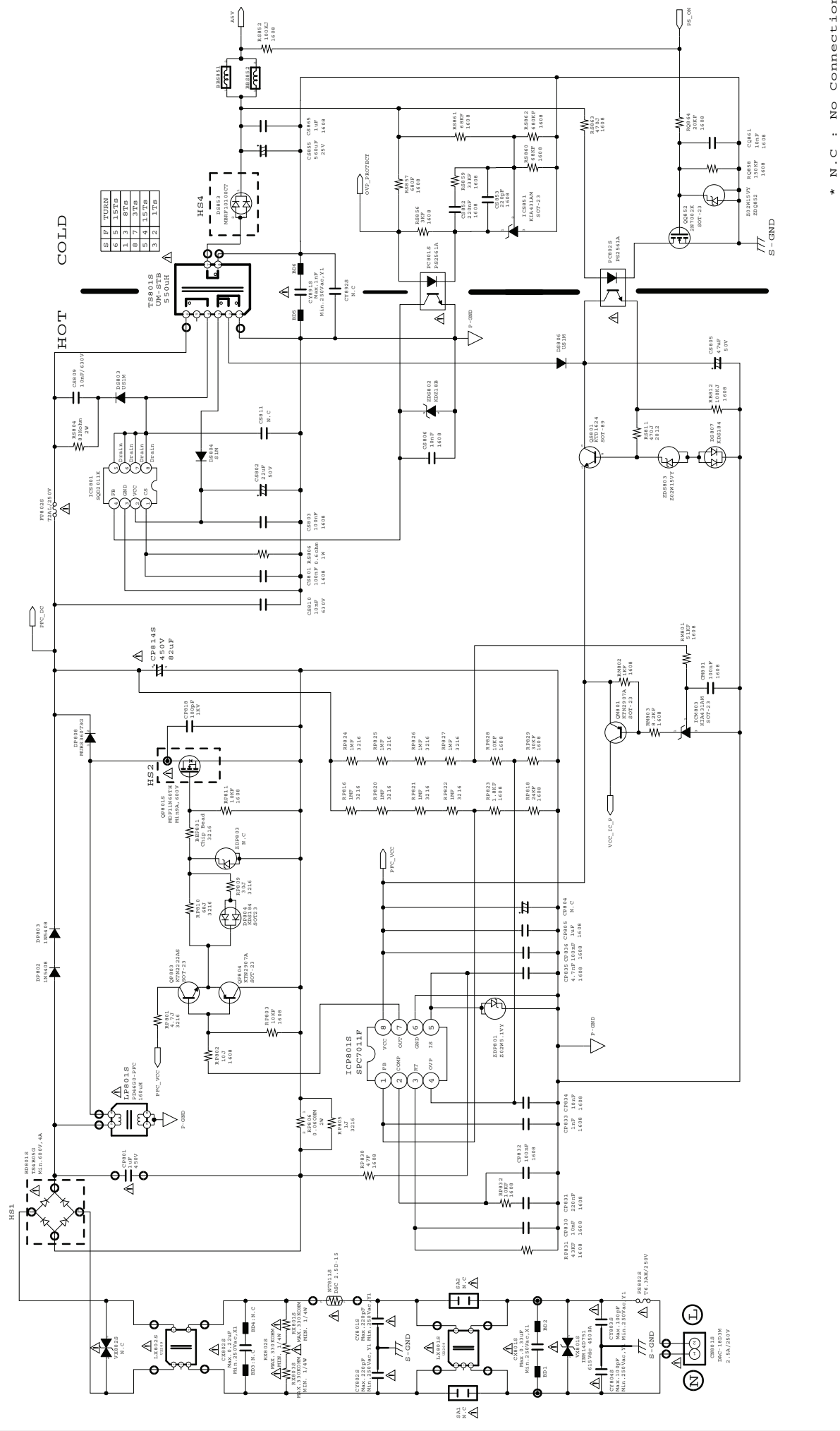


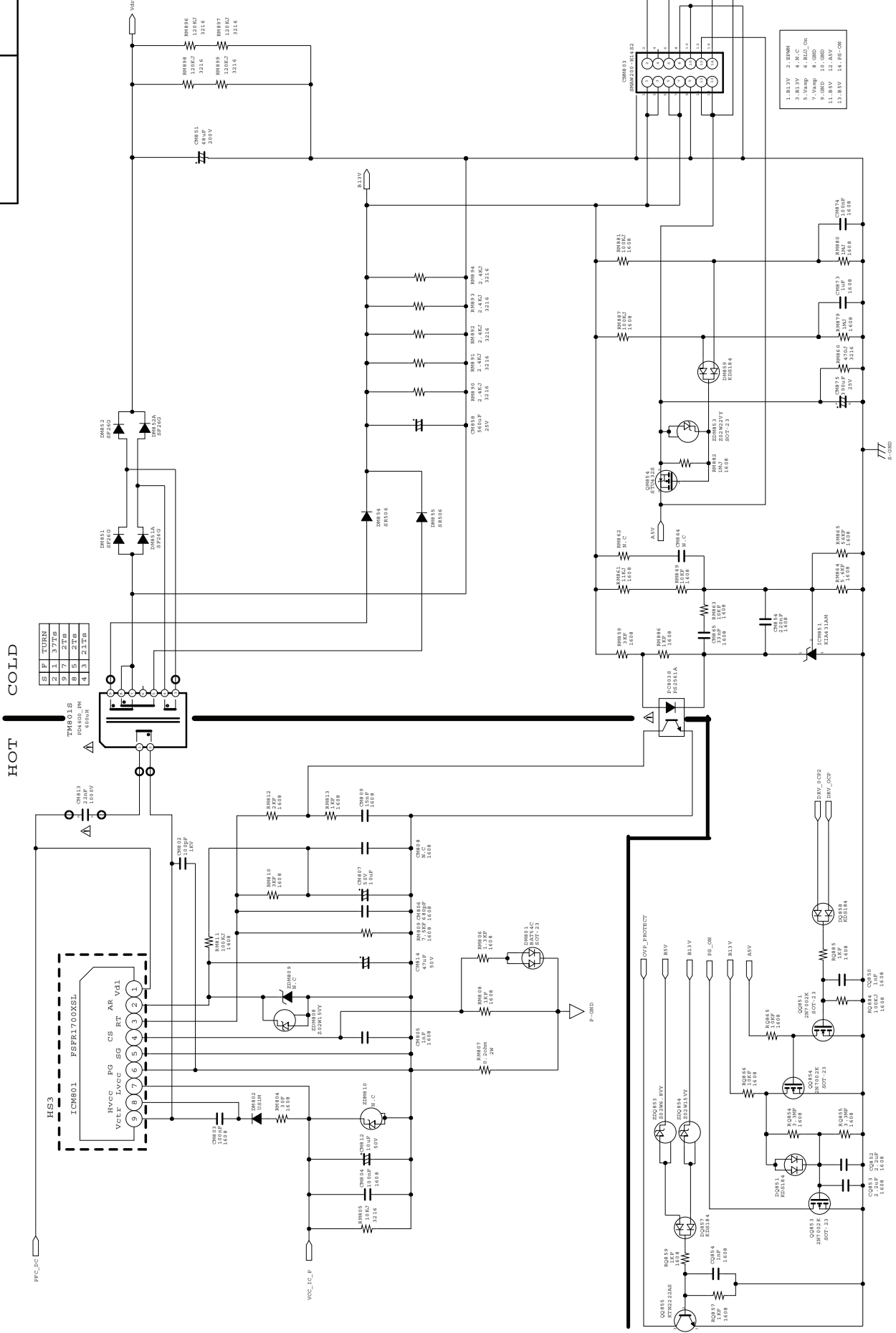


SPECIFICATION
PD46G0_BSM
(CIRCUIT DRAWING)

STD RECORD NO. BN44-00473A
PAGE PUB. DATE 2011.03.11
PAGE REV. DATE

4. CIRCUIT DRAWING





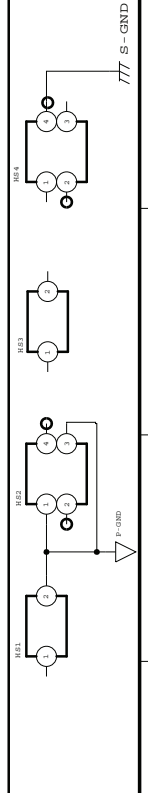
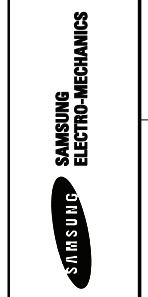
S	F	T	U	R	N
2	1	3	7	7	F
3	7	2	7	2	F
4	3	2	1	2	F
5	3	2	1	2	F

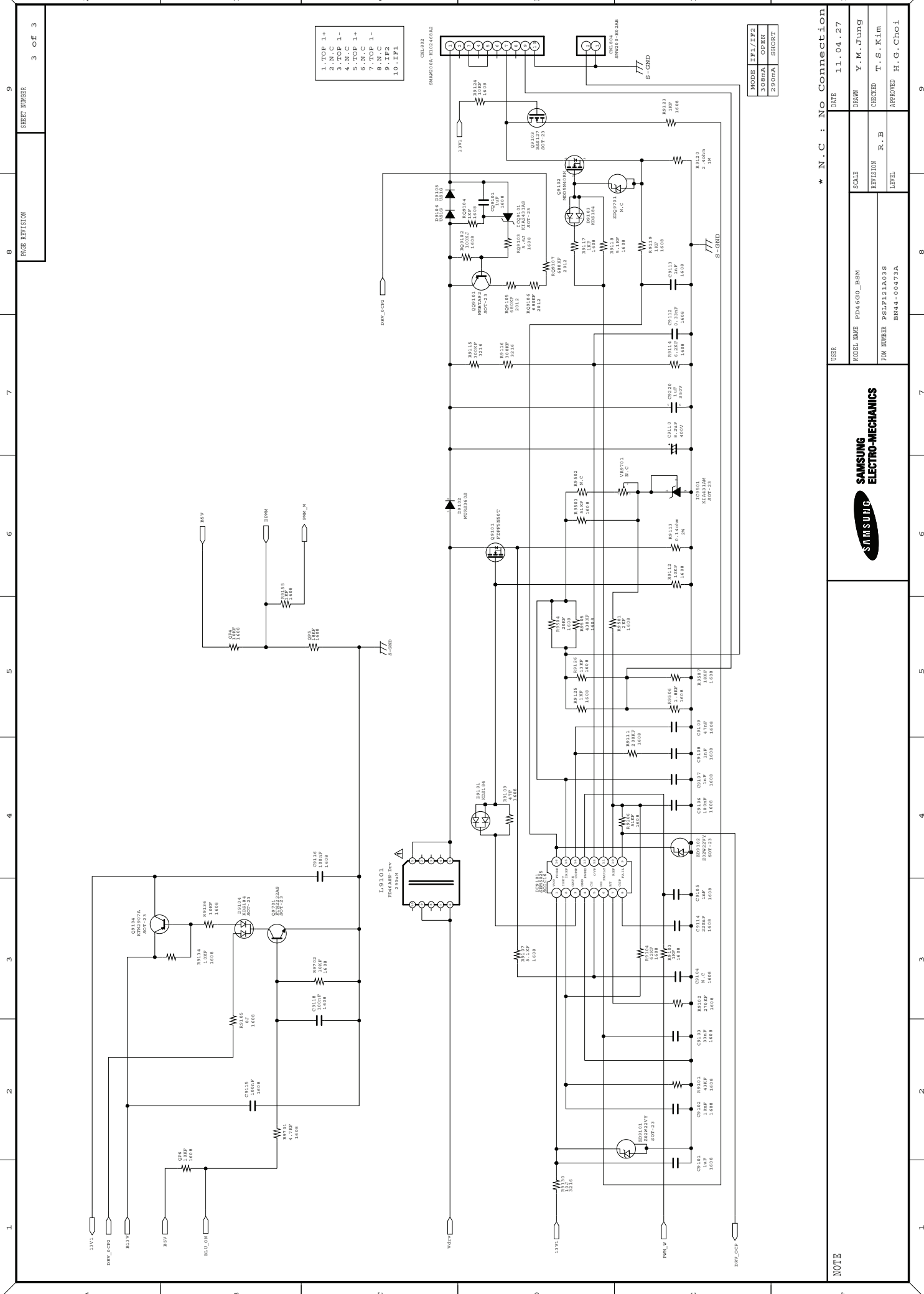
- 1. B13V 2.180M
- 2. 100K 1.40B
- 3. 100K 1.40B
- 4. 100K 1.40B
- 5. 100K 1.40B
- 6. 100K 1.40B
- 7. 100K 1.40B
- 8. 100K 1.40B
- 9. 100K 1.40B
- 10. 100K 1.40B
- 11. 100K 1.40B
- 12. 100K 1.40B
- 13. 100K 1.40B
- 14. 100K 1.40B
- 15. 100K 1.40B

* N.C : No Connection

DATE	11.04.27
DRAWN	Y. M. Jung
CHECKED	R. B
APPROVED	H. G. Choi

USER	PD4600_BSM
MODEL NAME	PD4600_BSM
REV. NUMBER	PSLFI21A03S
REV. LEVEL	BN44-00473A





- 1. TOP 1+
- 2. N.C
- 3. TOP 1-
- 4. N.C
- 5. TOP 1+
- 6. N.C
- 7. TOP 1-
- 8. N.C
- 9. IF2
- 10. IF1

MODE	IF1/IF2
300mA	OPEN
250mA	SHORT

SAMSUNG ELECTRO-MECHANICS

* N.C : No Connection

USER	MODEL NAME	SCALE	DATE
	PD460_BSM		11.04.27
		REVISION	DRAWN
		LEVEL	Y. M. Jung
			CHECKED
			T. S. Kim
			APPROVED
			H. G. Choi

NOTE



SPECIFICATION
PD46G0_BSM
(BLOCK DIAGRAM PART)

STD RECORD NO.
PAGE PUB. DATE
PAGE REV. DATE

BN44-00473A
2011.03.11

5. BLOCK DIAGRAM PART

