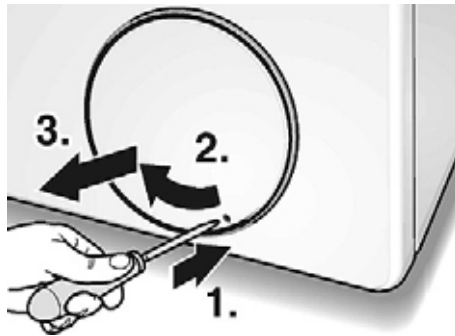


6.15 Door Lock removal



CAUTION: Take care to not get cut on front panel opening when opening drain pump access cover.

1. Remove fascia panel by removing four screws (and plastic screw caps). Carefully lay fascia panel out of the way (on top panel).
2. Using a thin tool (e.g. awl or drill bit), push latch on circular drain pump access cover (through small hole in cover), then rotate cover clockwise to remove it.



3. Door lock manual release cable is held to the right side of the drain pump by a clip. Pull on the cable to release the door.



4. Remove two screws holding door lock to front panel.

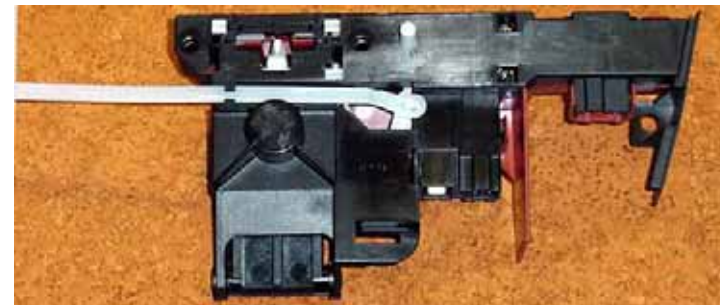
5. Pry out white plastic front shield until it pops off front panel



6. Slide lock to left until plastic lock rails clear notch in front frame.



7. Disconnect wire harness connectors from door lock.
8. Remove white manual release rod from door lock by rotating it (180°) until pear-shaped notch in rod lines up with similarly shaped knob on door lock.



6.16 Door Locks Resetting

Occasionally door locks stay locked when doors are opened while they're locked, preventing doors from closing. There are **three ways** to reset door locks (shown below) – each has advantages & disadvantages:

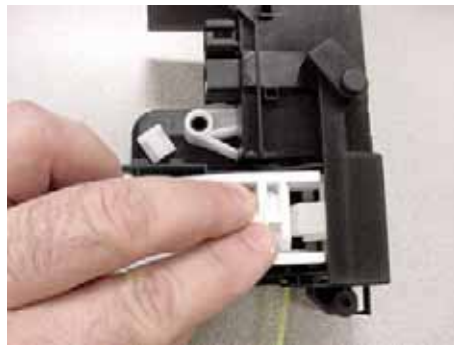
6.16.1 Access past door seal (shown on previous page)

eliminates any chance of cosmetic damage, but requires reattaching door seal spring (which can be tricky).

1. Remove front seal spring
2. Remove door seal

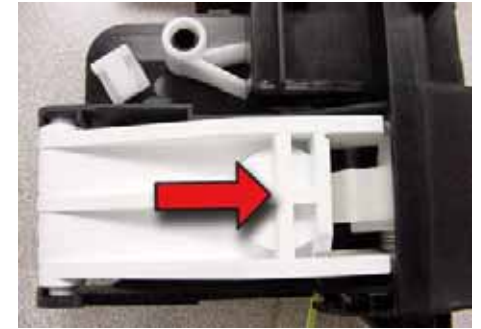


3. Push onto back of door lock until it clicks open

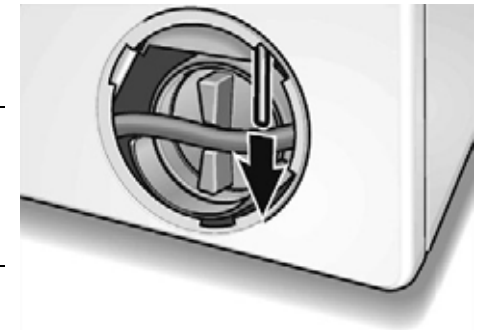


Rear view

i **Hint:** Reach around back of door lock (opposite latch opening) and push onto back of lock plate (directly behind latch) until it clicks.



i **Hint:** If lock doesn't release, pull manual door release rod (down) and push onto back of lock a 2nd time.



Door lock latched



Door lock open



i **Note:** Advice customers against pulling doors open while locked.

6.16.2 Access from top panel

Provides access to door lock without removing door seal, but allows scratching of fascia panel and screw caps. Remove fascia panel and lift fascia panel up.



6.16.3 Pulling door lock latch out

provides quickest repair and doesn't require removing parts for access, but allows scratching of door lock. To pull latch out, reach into lock with a strong steel loop, place loop behind latch and pull latch out. Some force is required.



- HINT:** Tub is suspended from springs and can easily be moved back for better access.
- i** Locked doors open when door latches aren't properly seated into door locks. Adjust door until latch fits properly into

6.17 Strainers cleaning

