

Technical data**Dimension**

Height	88,0	cm
Width	40,0	cm
Depth	60,0	cm

Weight

Net weight	66	kg
With package	63	kg

General specifications

Voltage	220 0%	V
Frequency	50	Hz
Connected load	1,85	kW
Fuse	10	A

Drum data**Drum speed**

Washing	55	rpm
Spinning	500	rpm

Capacity

Max. load	5,0	kg
-----------	-----	----

Electrical building parts**Heating**

Type	Tubular radiator	
Rated power draft	1,85	kW
Mains Voltage	220	V

Drain pump

Power consumption	40	W
Capacity	11,5	l/min
Rotation speed	3000	rpm
Height of drain hose	max. 1,0	m
	min. 0,55	m

Motor

Asynchronous 2/16

Timer

Typ	EC 4453
Impulses	60
The Timer program chart includes	
2 basic programmes	- normal washing - delicate washing & wool

Thermostat

A - a fixed thermostat	40	°C
B - a fixed thermostat	60	°C
C - a fixed thermostat	90	°C
D - a safety thermostat	107	°C
E - a temperatur selector	7	pos.

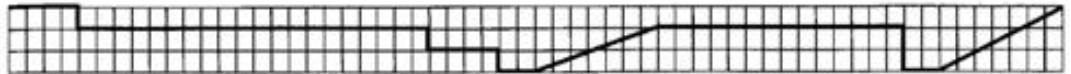
Pressostat

Quantity of water at switching point without laundry		
Foam level	2	l
Low level	9	l
High level	22	l
Safety level	25	l

Push button switch

- half load

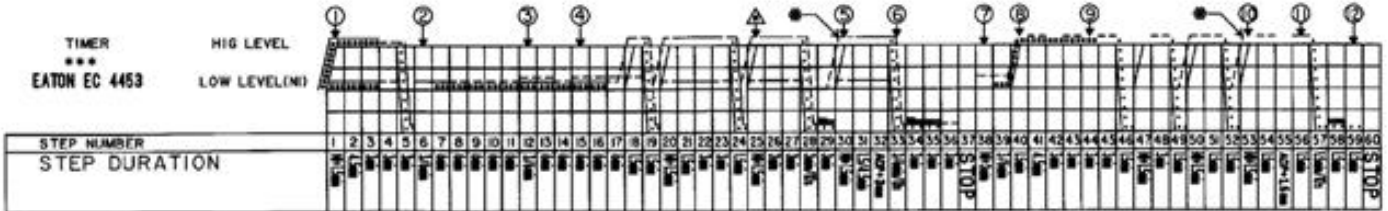
- 1 PL PREWASH
- 2 L MAIN-WASH
- 4 ▲ BLEACHING
- 3 ● SOFTENER



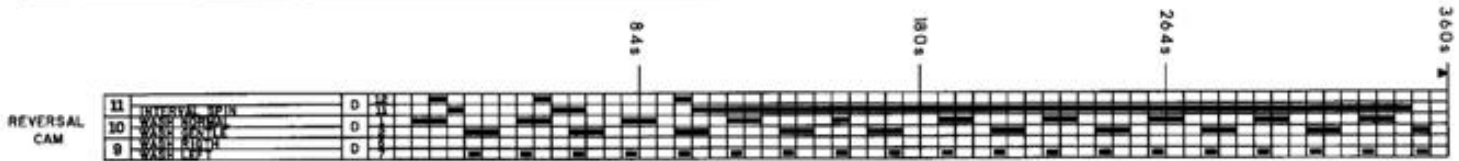
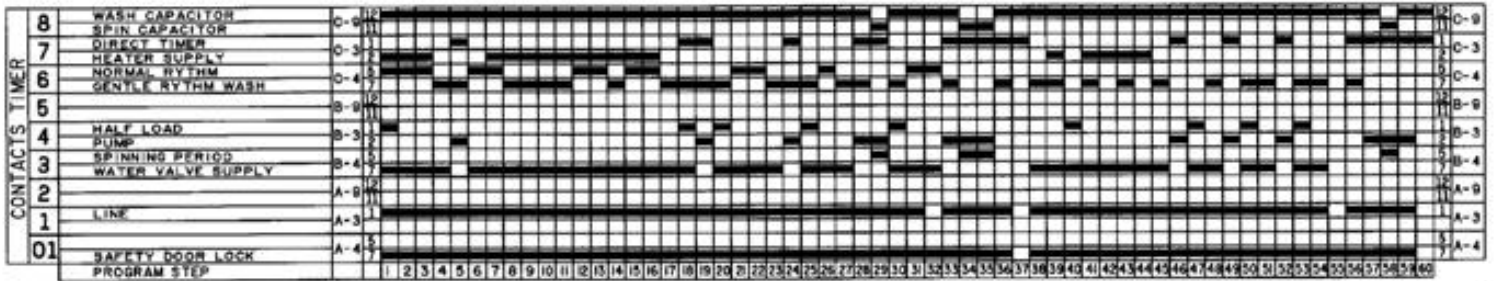
TIMER

EATON EC 4453

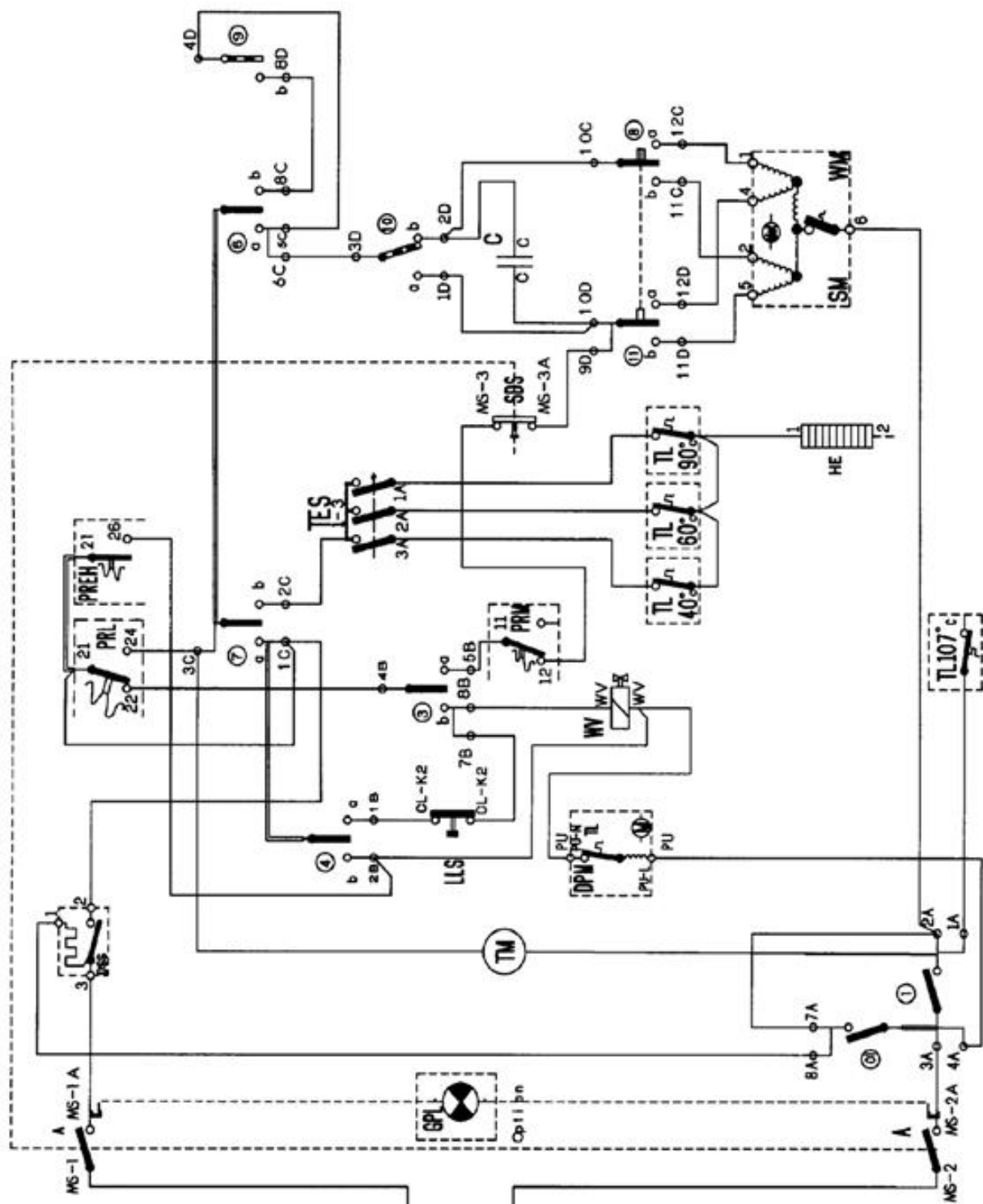
HIG LEVEL
LOW LEVEL(M)



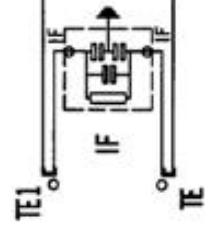
- NORMAL RYTHM
- GENTLE RYTHM
- ***** HEATING
- DRAINING
- ▬▬▬▬▬ INTERVAL SPINNING *
- SPINNING SPEED
- CONTACT CLOSED
- ACP : RINSE HOLD
- N : LOW LEVEL



Circuit diagram



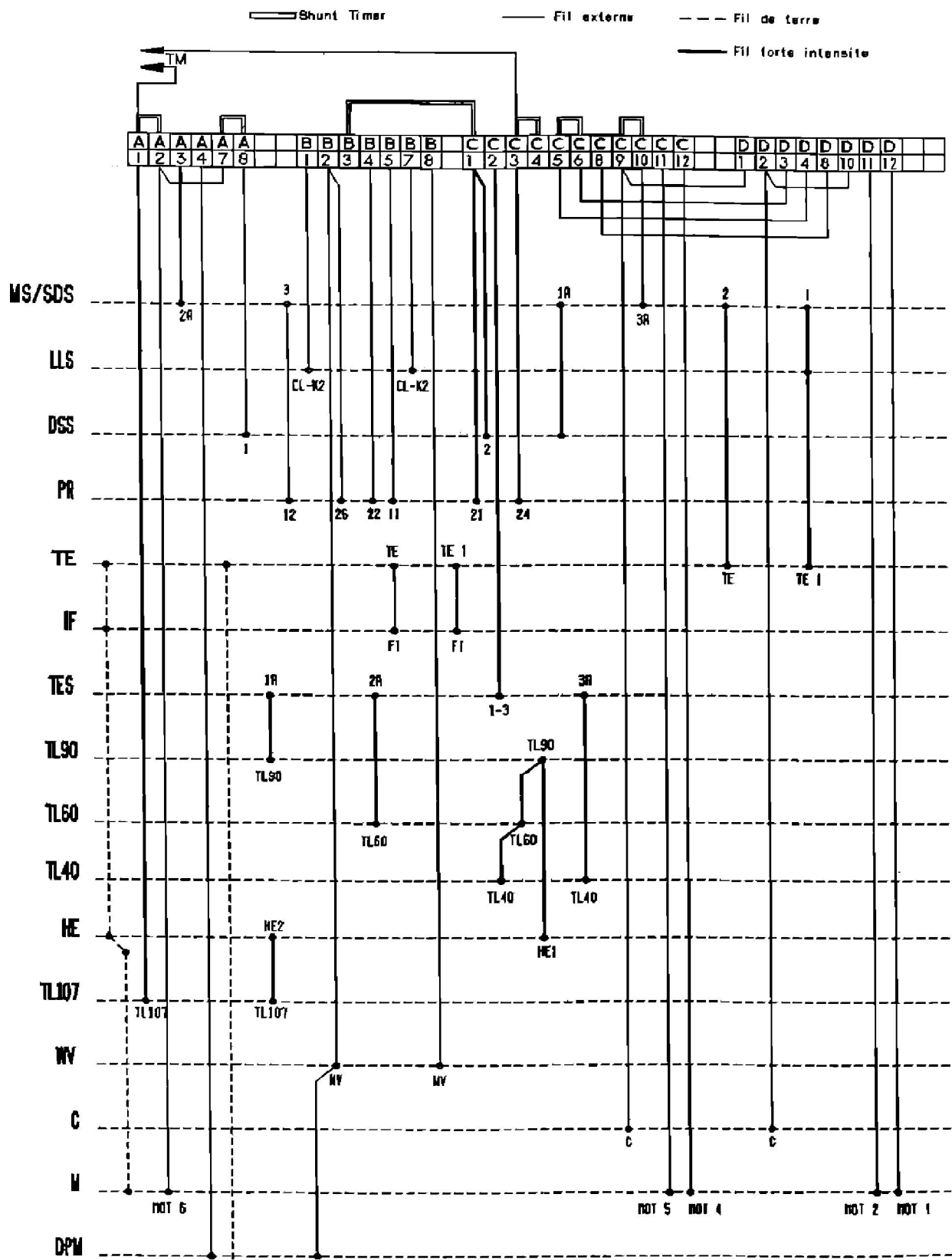
- A Main switch
- DPM Draining pump motor
- GPL Pilot lamp
- IF Interference filter
- LLS Switch 2 kg
- MS On/off switch
- PREH Pressostat extra high level
- PRL Pressostat low level
- PRM Middle level
- SDS Spin drying switch
- SM Spin drying level
- TE connecting block
- TES Thermostat selector
- TL Thermostat fix.
- TM Timer motor
- WM Washing motor
- WV Water inlet valve



4211.012.4748.2 460T/560T

4812 712 78241 CS.5610.B

Wiring diagram



Carrosserie

- C Starting capacitor
- DPM Draining pump motor
- DSS Door safety switch
- HE Heating element
- IF Interference filter
- LLS Switch 2 kg
- M Motor
- MS On/off switch
- PR Pressostat
- SDS Spin drying switch
- TE connecting block
- TES Temperatur selector
- TL Thermostat fix.
- TM Timer motor
- WV Water inlet valve

D	1	2	3	4			8		10	11	12	
C	1	2	3	4	5	6		8	9	10	11	12
B	1	2		4	5		7	8				
A	1	2	3	4			7	8				

EC 4453

4211.012.4748.1

4812 712 78239

CS.5609.B